

तितली

The Dancing Wings



*An initiative of CASFOS
Dehradun*

तितली The Dancing Wings

An initiative of CASFOS Dehradun



**Central Academy for State Forest Service
Dehradun, Uttarakhand-248006**

तितली The Dancing Wings

An Initiative of CASFOS, Dehradun

Publication and Copyright © 2020 Central Academy for State Forest Service, Dehradun

About Authors:

“Team Butterfly”. This Booklet is not an individual work rather a result of the teamwork of Officer Trainees of 2018-20 SFS Induction course and the team members are Ashutosh Mallik, Chandrashekhar C Patil, Prabhu Datta Himansu Mishra, Rashmi Choudhury and Susanta Kumar Jena

Photograph:

Front and Inner Cover page © Chandrashekhar Patil

Back Coverpage © Chandrashekhar Patil, Prabhu Datta Himansu Mishra, Ashutosh Mallik

Photograph in Text © Respective photographer and source indicated

Drawings and Diagrams © Respective Individual and Organization mentioned

Declaration:

Majority of butterfly photographs were taken by Officer Trainees of 2018-20 SFS Induction Course. Many photographs of butterflies were taken from www.ifoundbutterflies.org due to non-availability of good photographs with authors. Copyrights along with source of photograph is mentioned below each photographs and diagrams wherever used in this booklet.

Team Butterfly
CASFOS, Dehradun

Designed and Printed at Vani Offset Printers, Dehradun



Acknowledgement

On accomplishment of this seemingly Sisyphean task we ought to acknowledge the contributions of several persons. Although FRI Campus is rich in Biodiversity and is an open treasure of natural beauty, capturing pictures of Butterflies is onerous. Further, collecting information on all the butterfly and turning it into a booklet is more gruelling.

The success and final compilation of this booklet required a lot of guidance and assistance. We are extremely privileged to have got this from an array of people. We owe our deep gratitude to Director of Forest Education Dr. R.P. Singh, IFS, for constant encouragement and guidance. We are extremely grateful to Principal, CASFOS Mr. Kunal Satyarthi, IFS, who took keen interest on this work and guided us all along. We express our profound gratitude to all the faculty members of CASFOS, Dehradun for all the support and valuable suggestions during our work.

We would like to express our deep sense of gratitude to Mr. Paramjeet Singh, IFS (Retd.), Dr. Shankar Kumar, Biologist, Mr. Sashi Kumar, IFS, Mr. Sanjay Sondhi, Founder of Titli Trust for spending their valuable time and suggestion during review of this booklet. We would like to thank our fellow Officer Trainees of 2018-2020 SFS Induction Course for their feedback, cooperation, support and invaluable friendship throughout the process of working on this booklet. The accomplishment of this booklet would not have been possible without them.

By,
Team Butterfly







Government of India
Ministry of Forest Environment and Climate Change
Directorate of Forest Education
P.O. New Forest, Dehradun - 248006

DFE'S Message.....



I am delighted to know that the CASFOS, Dehradun is publishing a booklet on Butterflies found in FRI Campus, Dehradun.

Every Officer Trainee of CASFOS, Dehradun is an untold story of commitment. In fact, they are store house of great potentials. It is our responsibility to create a congenial atmosphere for their natural blooming. With the aid of the beautiful campus they have come out with the first edition of such a booklet which has started a legacy for the batches to come.

I am happy to know that this butterfly booklet is an authentic record of the various types of Butterflies found in the FRI campus. Even a cursory glance at the content of this booklet is enough to show the diversity of butterflies of FRI, Campus which one can carry in his/her pocket as a guide to butterfly watching.

“Learning gives creativity, creativity leads to thinking, thinking provides knowledge and knowledge makes great.”

I extend my hearty congratulation to the Principal CASFOS, Faculty members and Officer Trainees on their outstanding achievement in the publication of this booklet.

Shri R.P. Singh, IFS
Date: 30-04-2020







Central Academy for State Forest Service Dehradun -248006

Pearls from Principal's pen..... 

It gives me immense pleasure in presenting the Butterfly booklet of FRI Campus by the Officer Trainees of 2018-2020 SES Induction Course.

Today CASFOS is not just a training academy but is a family in which the Officer Trainees from different States, faculty and office staff work unitedly. It is a platform for the Officer Trainees to exhibit, explore and enhance their talent. It is also a training on documentation of their observation which is necessary for a forester.

I am sure that this butterfly booklet will be valuable to a large extent to readers due to the vast array of authentic information and facts in this booklet.

I heartily congratulate all the Faculty members and the Officer Trainees of "Team Butterfly" who put their hardwork inspite of their busy schedule of the training to bringout this beautiful compilation and adding glory to CASFOS, Dehradun.

I expect my Officer Trainees to be sincere, responsible and committed to their work as they have proven to be.

I wish best of luck to all the Officer Trainees in their future professional endeavours. This booklet would certainly be an inspiration for all the coming batches of Officer Trainees.



Shri Kunal Satyarathi, IFS

Date: 30-04-2020



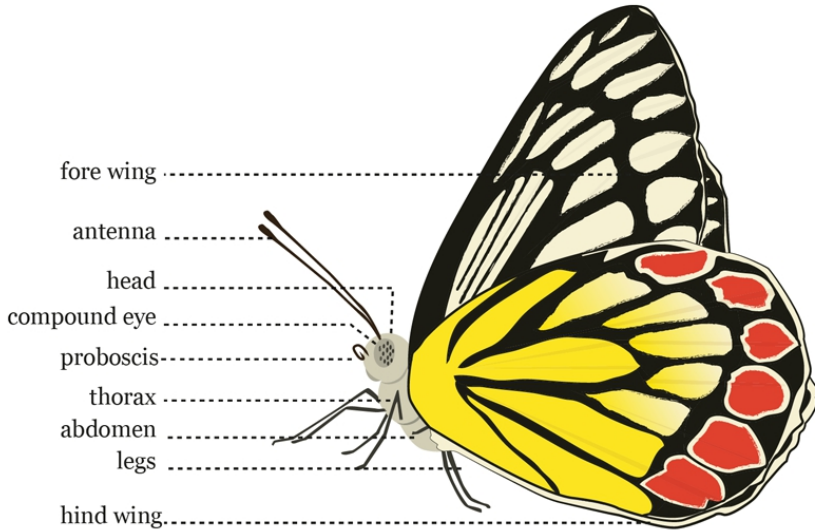
CONTENT

	PAGE
1. Parts of Butterfly for Identification	I-II
2. Lifecycle of Butterfly	III
3. Introduction	V
4. Unique Behaviour of Butterfly	VI-VII
5. Family: Hesperiiidae (Skippers)	1-11
6. Family: Lycaenidae (Blues)	12-30
7. Family: Nymphalidae (Brush Footed Butterflies)	31-66
8. Family: Papilionidae (Swallowtails)	67-74
9. Family: Pieridae (Whites and Yellows)	75-89
10. Family: Riodinidae (Punches and Judies)	90-91
11. Reference	92
12. Index of Common Names - Annexure: I	93-94
13. Index of Scientific Names - Annexure: II	95-96



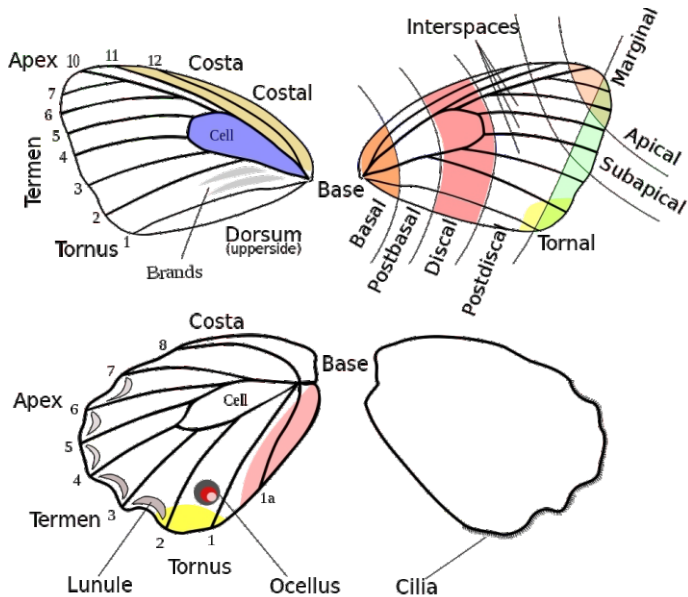


Parts of Butterfly for Identification



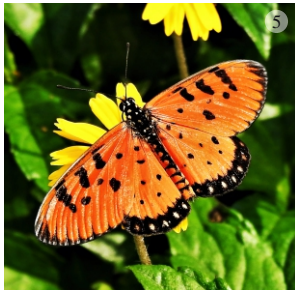
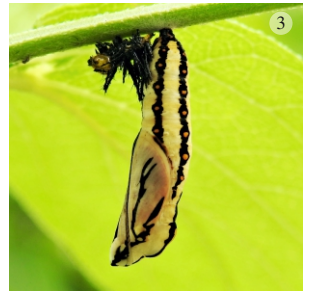
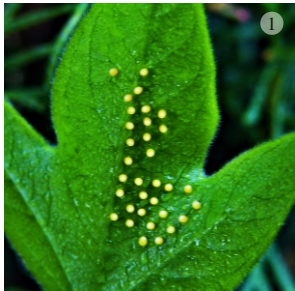
Source : www.wvfindia.org

Parts of Butterfly for Identification



© L. Shyamal, Credit : Creative Commons Attribution - Share Alike 3.0

Life Cycle of a Butterfly

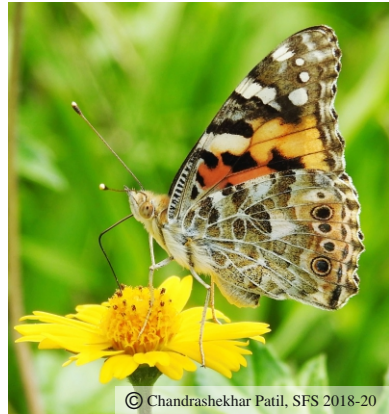


Tawny Caster: 1. Egg, 2. Caterpillar, 3. Pupa, 4 and 5. Adult
© Chandrashekhar Patil, SFS Batch 2018-20



INTRODUCTION:

Butterflies have always fascinated the mankind and are celebrated in art for their great shapes, magnificent colours and unique patterns. They play an ecologically important position owing to their key role as pollinators as well as part in food web, thus maintaining the biodiversity. Butterflies are good biological indicators of ecological variation and environmental quality. They occur in widespread habitats. Lifespan of butterflies ranges from 1-3 weeks to few months. Butterflies belong to the order Lepidoptera, which means scaly winged insects. These include Moths (Heterocera: have the antennae variable in form) and Butterflies (Rhopalocera: clubbed or knobbed antennae). Mostly the butterflies are diurnal and usually rest with their wings closed, while moths are nocturnal and rest with their wings open with some exceptions. Antennae of butterflies are always slender with clubbed or hooked tip whereas moths show variable antennae viz. feathery, hair like, club shaped.



Unique Behaviour of Butterflies



Basking: Butterflies being cold blooded bask in the sun-shine in the morning as well as in the evening before sunset.

Floating: The specific cooling phenomenon of butterflies where they slowly glide over the surface of shallow, non-turbulent, slow running water in forest stream under shade to keep their body cool in hottest part of the day.





© Chetan Gasti, SFS 2018-20

Sap-sucking: Congregation of many species together to suck the sap or gum that oozes out from the tree stem.



© Chandrashekhar Patil, SFS 2018-20



© Chetan Gasti, SFS 2018-20

Mud-puddling: Males of many species of butterfly absorb some essential element such as sodium from the ground contaminated with animal urine/ excreta/ sweat of human or exude water in the form of droplets from the abdomen to moisten the dry ground surface on which minerals are present so that it can be sucked.

FAMILY: HESPERIIDAE (SKIPPERS)

Small to medium sized, fast flying butterflies, got its name Skipper due to “Skipping” mannered flying. 277 species of skippers recorded from India out of 3500 species of world. Usually mistaken for Moths, but easily differentiated from other butterflies by their stout body compared to wing, presence of relatively small angular wing, and the thin hook like extension called apiculus at the end of the club of antenna. Some species have exceptionally long proboscis for easy accessibility to nectar of tubular flower. Skippers are of two types : One holds its wings completely open and flat across when settled, while other usually aligns with its wings completely closed or with its hindwings more or less completely open, but forewings only partially open. The larval host plants are mainly grasses, palms, bamboos, ginger and other monocotyledons, but few also feed upon plants of *Achyranthes*, *Terminalia*, *Grewia*, *Dalbergia* and other dicotyledons. Most of the caterpillars usually feed at night.



© Chetan Gasti, SFS 2018-20



1. Orange Awlet

Scientific Name : *Burara jaina* (Moore, 1866)

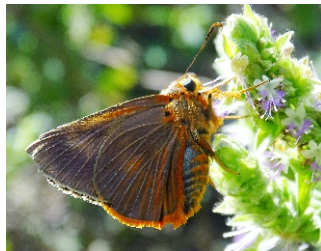
Description : 60-70 mm. Upperside light chocolate brown, with forewing coastal margin and hindwing fringed with orange. Underside paler with orange veins. Hindwing cilia prominently orange. Cell spot and discal areas have white markings.

Habitat : Prefers forest openings and edges. Preferably in low elevation forest, but can be seen up to 1,700 m.

Habit : Flies fast, Crepuscular. Visits flowers, bird droppings, moist soil and occasionally food waste and ash near kitchens at forest edges.

Larval Host plant : *Combretum extensum*, *Hiptage benghalensis*

Status : Uncommon



© Ashutosh Mallik, SFS 2018-20



© Ashutosh Mallik, SFS 2018-20



2. Grass Demon

Scientific Name : *Udaspes folus* (Cramer, 1775)

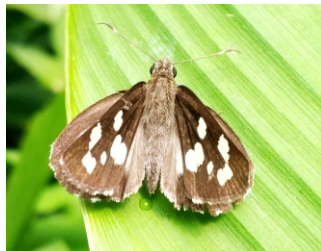
Description : 40-48 mm. A black butterfly with white spotting and patches. Big semi-transparent central white patch on hindwing. Presence of many white spots on forewing which is visible from both sides. Hindwing with brown edges and spots.

Habitat : Prefers deciduous and semi-evergreen forests. Seen often close to the water. Altitudinal range from the foothills up to 2,400 m.

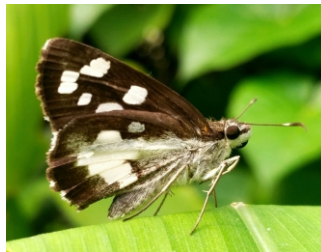
Habit : Fast fliers, territorial by nature. Basks with partial opened wings. Feeds on flower nectar and bird droppings. Can be seen abundantly during monsoon.

Larval Host Plant : *Curcuma aromatica* (*Curcuma sp.*), *Zingiber sp.*, *Hedychium sp.*

Status : Common



© Ashutosh Mallik, SFS 2018-20



© Ashutosh Mallik, SFS 2018-20



3. Common Redeye (Common Branded Redeye)

Scientific Name : *Matapa aria* (Moore, 1866)

Description : 40-55 mm. Deep redevye, plain brown wings without any markings. Hindwings has greyish edge tinged with pale yellow, in distinct black brand on upperside of the forewings.

Habitat : A dweller of bamboo forest or plantations, forest nurseries, forest paths. Altitudinal range from the foothills up to 840 m.

Habit : Very fast flier. Visit flowers for nectar. Prefers shade, but can be seen while basking during day occasionally.

Nectar Plant : *Bambusa arundinacae* and other bamboo species.

Status : Common



© Ashutosh Mallik, SFS 2018-20



© Ashutosh Mallik, SFS 2018-20



4. Smaller Dartlet (Indian Dartlet)

Scientific Name : *Oriens goloides* (Moore, 1881)

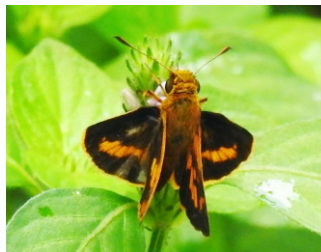
Description : 24-28 mm. A small yellowish-brown skipper. Tawny yellow markings or bands on the wings. All the bands are at central part of the wings.

Habitat : Prefers openings and clearings in moist forest habitat. Usually settles on leaves and herbaceous flowers. Altitudinal range from the foothills up to 1,200 m.

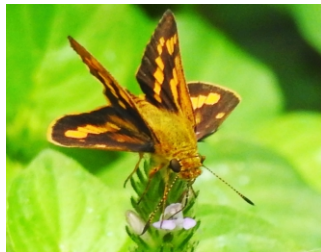
Habit : Fast flier, often return to its perch, bask on upper surface of leaf with partially opened wings.

Larval Host Plant : Grasses like *Oplismenus burmani*

Status : Common



© Prabhu Datta Himansu Mishra, SFS 2018-20



© Prabhu Datta Himansu Mishra, SFS 2018-20



5. Dark Palm Dart

Scientific Name : *Telicota bambusae* (Moore, 1878)

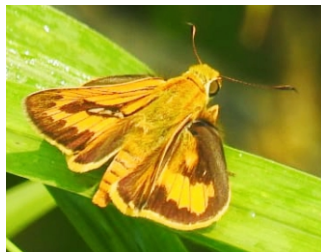
Description : 33-36 mm. Dark brown above with orangish yellow markings. Discal band more or less conjoined to costal band of same colour on upperside of the forewing. Yellow orange colour from the discal band. If extended outward along the veins, does not extend to wing margin.

Habitat : Occurs in a variety of habitats ranging from moist forested hills, well wooded plains to moderately dry areas except arid regions of the North West. Altitudinal range from the foothills up to 1,700 m.

Habit : Flies fast. Basks with wings partially open. Males mud-puddle and feed on bird droppings. Feeds on flower nectar.

Larval Host plant : *Calamus*, *Imperata cylindrica*, *Oryza sp.*, *Saccharum sp.*

Status : Uncommon



© Ashutosh Mallik, SFS 2018-20



© Ashutosh Mallik, SFS 2018-20



6. Small Branded Swift

Scientific Name : *Pelopidas mathias* (Fabricius, 1798)

Description : 32-38 mm. A small butterfly with brown above and golden sheen, more pointed forewing and greenish wing bases. Small white spots on forewing.

Habitat : Prefers forest edges, scrub, plantations, gardens and agricultural lands. Altitudinal range from the foothills up to 2,100 m.

Habit : One of the commonest among swifts. Fast fliers. Basks with wings partially open on the upper surface of a leaf. Feeds on flower nectar. Settles on wet ground and low laying flowers and leaves. Can be seen throughout the day, but active during early morning and evening.

Larval Host Plant : *Cymbopogon nardus*, *Imperata cylindrica*, *Oryza sativa*, *Saccharum officinarum*

Status : Common



© Ashutosh Mallik, SFS 2018-20



© Ashutosh Mallik, SFS 2018-20



7. Common Small Flat

Scientific Name : *Sarangesa dasahara* (Moore, 1866)

Description : 30-35 mm. Dark brown butterfly, with light brown mottling, forewing has semi-transparent minute spots. Female has an additional spot in cell. All three spots in female are in straight line.

Habitat : Seen over the grass and among bushes, countryside, open forest, prefers wetter habitat. Altitudinal range from the foothills up to 2,500 m.

Habit : Fast flier, some what erratic and jerky. Fly close to the ground. Like nectar of flower, visit bird droppings, occasionally seen in damp patches. Rests on the under side of the leaf, but bask on the upper side of the leaf. More frequently can be seen during end of monsoon.

Larval Host Plant : *Asystasia sp.*, *Blepharisis perrima*

Status : Common



© Ashutosh Mallik, SFS 2018-20



© Ashutosh Mallik, SFS 2018-20



8. Tricolour Pied Flat

Scientific Name : *Coladenia indrani* (Moore, 1866)

Description : 35-40 mm. Above tawny brown. Discal and sub apical series of prominent, black edged, hyaline spots. Discal spot, hyaline on upperside of the forewing. Black spot at base. series of prominent, black post discal spots on the upperside of the hindwing. Hindwing cilia prominently chequered.

Habitat : Occurs at lower elevations. Prefers to remain in the shade. Recorded in the Central Himalaya from 300 m to 1,320 m.

Habit : Flies fast. Basks on upper surfaces of leaves. Visits moist soil. Feeds on flower nectar. Can be seen near stream edges in forests.

Larval Host plant : *Mallotus philippensis*, *Desmodium sp*, *Xylia dolabriformis*, *Grewia microcos*

Status : Uncommon



© Nilendra Narayan Singh Dalapati, SFS 2018-20



© Nilendra Narayan Singh Dalapati, SFS 2018-20



9. Golden Angle

Scientific Name : *Caprona ransonnettii* (Felder, 1868)

Description : 35-45 mm. Angular wings, upper side of tawny golden yellow colour, semi-transparent white spots. Central and marginal yellow-brown areas on upper forewing. Central yellow-brown area divided by dark lines on upper forewing.

Habitat : Mostly seen near hilly forests. Prefers open sunny areas with vegetations. Altitudinal range between 600 m to 1,800 m.

Habit : Fast fliers. Fast flight close to ground, fond of visiting flower and damp patches.

Larval Host Plant : *Helicteres isora*

Status : Uncommon



© Ashutosh Mallik, SFS 2018-20



© Ashutosh Mallik, SFS 2018-20



10. Indian Skipper (Asian Grizzled Skipper)

Scientific Name : *Spialia galba* (Fabricius, 1793)

Description : 20-27 mm. Small butterfly, with white-spotted marking on the black body. Cheque red wing fringes. Females are larger and darker than males with smaller spots than male.

Habitat : Prefers open grassy habitats in vicinity of forest edges and grasslands, sometime in gardens. Altitudinal range from the foothills up to 2,700 m.

Habit : Swift flier, flight low and often swinging. Fond of flower and damp patches. Settling on grass and herbs, rests on hanging grass blades or branch tip of low shrubs and herbs.

Larval Host Plant : *Hibiscus sp.*, *Sida rhombifolia*, *Waltheria indica*

Status : Common



© Ashutosh Mallik, SFS 2018-20



© Ashutosh Mallik, SFS 2018-20

FAMILY: LYCAENIDAE (BLUES)

It is the second largest family of butterflies consisting of more than 5000 species of butterfly worldwide, out of which 380 species were recorded in India. Majority of species of this family have different shades of Blue colour on upper side of wing. Many of the species of this family have one or more tails on their hind wing. Usually occurred in diverse habitat, i.e. from plains to high mountains, from grasslands and human habitation to dense forests. Male Lycaenid butterflies use only four legs out of six, as forelegs are non functional and smaller.



© Ashutosh Mallik, SFS 2018-20



11. Sorrel Sapphire

Scientific Name : *Heliophorus sena* (Kollar, 1844)

Description : 28-33 mm. Hindwing tailed. Below, pale brown. Prominent post-discal white band on both wings, bordered outwardly with a series of large orange spots, outwardly black-edged. Underside of the hindwing prominent costal and dorsal black spots. Above brown, purple-washed in male, prominent from certain angles. Upside of the hindwing series of orange sub-marginal spots. Female- an additional series of orange sub-marginal spots on upside of the forewing.

Habitat : Abundant in forest edges and gardens, very commonly found near its larval food plant, i.e. Sorrel (*Rumex hastatus*). Altitudinal range from the foothills up to 2,000 m.

Habit : Weak flier. Feeds on nectar of flower, male are more commonly seen as compared to females.

Larval Host Plant : *Rumex hastatus*

Nectar Plant : *Lantana sp.*, *Parthenium sp.*

Status : Common



© Milind Bhakare
Source www.ifoundbutterfly.org



© Ashutosh Mallik, SFS 2018-20



12. Common Pierrot

Scientific Name : *Castalius rosimon* (Fabricius, 1775)

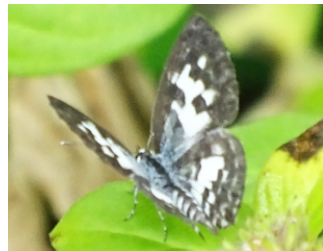
Description : 24-34 mm. Tailed. Below, white with numerous black spots. Underside of the forewing/hindwing with basal streak on hindwing, continued to forewing. Upperside of the forewing/hindwing white with brown spots, bases bluish. Female with browner above. Marking on below gets reduced in dry season form.

Habitat : Prefers open forests, countryside and edges of fields in the plains and foothills. Altitudinal range from the foothills up to 2,500 m.

Habit : Fluttering flight, close to the ground. Fond of sunshine, mud puddling. Visits flower, dead insects, bird droppings and animal dung.

Larval Host Plant : *Zizyphus* sp. (*Z. jujube*, *Z. mauritiana*, *Z. rugosa*)

Status : Common



© Ashutosh Mallik, SFS 2018-20



© Ashutosh Mallik, SFS 2018-20



13. Red Pierrot

Scientific Name : *Talica dana nyseus* (Guerin-Meneville, 1843)

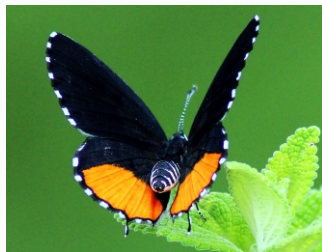
Description : 30-36 mm. Tailed. Underside of the forewing: cell and base white, rest of wing black with two rows of white spots. Underside of the hindwing white with a few black spots at base and disc. Margin with white-spotted, bright red band. Above, black with broad orange margin on upperside of the hindwing.

Habitat : Prefers forest edges, open country side and gardens, usually nearer to food plant. Likes moist, sheltered habitats in forest as well as urban gardens. Altitudinal range from the foothills up to 1,900 m.

Habit : Slow fluttering flight. Stays close to the ground or low shrubs and bushes.

Larval Host Plant : *Kalanchoe lacinita*, *Kalanchoe pinnata*, *Bryophyllum pinnatum*

Status : Common



© Santosh Thakur, FG, Shimla, HP



© Hemalata S., SFS 2017-19



14. Himalayan Pierrot (Veined Pierrot)

Scientific Name : *Tarucus venosus* (Moore, 1882)

Description : 27-31 mm. Tailed. Below, creamy white. Post-discal series of spots not in a continuous band rather consisting of more or less connected spots. Upperside of the forewing with prominent dark-spot on cell-end. Additional dark discal spots, which may be absent. Broad dark marginal border along termen.

Habitat : Prefers dry, open countryside and scrub habitat. Can be seen in the plains and the foothills up to 1,200 m.

Habit : Weak flier, keeping close to shrubs on the ground. Seen commonly near larval food plant, feeds on flower nectar.

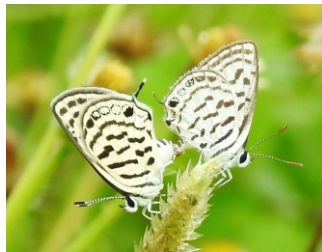
Larval Host Plant : *Zizyphus sp.*

Status : Common



© Amrita Sen

Source www.ifoundbutterfly.org



© Amrit Anjan Sahoo, O.U.A.T



15. Forget-me-Not

Scientific Name : *Catochrysops strabo* (Fabricius, 1793)

Description : 25-35 mm. Tailed. Below, grey with discal band of darker spots on both wings. Underside of the forewing with costal spot at midway between cell-endbar and uppermost spot in discal band. Upperside of the forewing/hindwing in male pale blue, female duller blue.

Habitat : Prefers open dry habitats of scrub and dry deciduous forests. Common along roadside and degraded areas, but usually away from cultivated area. Altitudinal range from the foothills up to 2,400 m.

Habit : Flies fast, near low bushes and shrubs. Visits moist soil, bird droppings, and animal carcasses. Always in sunshine. Caterpillars attended by ants.

Larval Host Plant : *Ougeinia dalbergiodes*, *Cylista scariosa*, *Desmodium elegans*, *Schleichera sp.*

Status : Common



© Ashutosh Mallik, SFS 2018-20



© Ashutosh Mallik, SFS 2018-20



16. Gram Blue SCH-II

Scientific Name: *Euchrysops cnejus* (Fabricius, 1798)

Description: 25-33 mm. Tailed. Below, grey with discal band of darker grey spots on both wings. Underside of the forewing having no costal spot. Underside of the hindwing with orange-crowned tornal spots ringed with silver. Three small black sub-basal spots; additional black spot at costa. Above, purplish-blue in male, brown in female.

Habitat: Commonly seen on flowers around forest edges, open scrubs and cultivation. Prefers open drier regions. Altitudinal range from the foothills up to 2,000 m.

Habit: Weak flier, strong rapid flight around bushes. Fond of flower and visit wet patches.

Larval Host Plant: *Butea monosperma*, *Ougeinia dalbergioides*, *Pisum sativum*, *Vigna sp.*, *Acacia sp.*, *Paracalyx scariosa*, cultivated varieties of grams and beans.

Status: Common



© Hemant Ogale

Source www.ifoundbutterfly.org



© Ashutosh Mallik SFS 2018-20



17. Plains Cupid (Cycad Blue)

Scientific Name: *Chilades pandava* (Horsfield, 1829)

Description: 25-30 mm. Tailed. Below, greyish-brown with a discal band of white-edged grey spots on both wings and a small costal spot. Underside of the forewing with prominent cell-end bars. Underside of the hindwing having series of four basal black spots and a large costal black spot. Two orange-crowned, silver-edged black tornal spots.

Habitat: Prefers open countryside, hill slopes, forest tracks close to streams. Altitudinal range from the foothills up to 2,300 m.

Habit: Weak flier. Nectar feeder. Mud puddling by male, caterpillars attended by ants, and usually observed near swarms near food plants i.e. various species of Cycads.

Larval Host Plant: *Cycas sp.*, cultivated varieties of grams and beans, *Acacia sp.*, *Xylia xylocarpa*

Status: Common



© Subramanyan Kalluri

Source www.ifoundbutterfly.org



© Amrit Anjan Sahoo, O.U.A.T



18. Common Cerulean

Scientific Name: *Jamides celeno* (Cramer, 1775)

Description: 27-40 mm. Tailed. Grey to greyish brown with white lines below. Male- pale bluish-white above. Upperside of the forewing border narrow, widening to apex. Female- bluish-white above. Upperside of the forewing very broad border, widens to apex. Upperside of the hindwing with sub-marginal spots.

Habitat: Prefers forest under growth and flowers, seen in wooded habitats of plains and hills, generally found in open forest, forest edges, forest tracks and gardens with larval plants. Altitudinal range from the foothills up to 2,000 m.

Habit: Weak fluttering low flight around bushes, like moist or damp areas, it's the only Cerulean can be seen outside forested areas. Feeds on flower nectar and bird droppings.

Larval Host Plant: Flame of the Forest (*Butea monosperma*) and *Pongamia sp.*, *Saraca asoca*, *Xylia xylocarpa*, *Elettaria cardamomum*, *Trichilia connaroides*.

Status: Common



© Ashutosh Mallik, SFS 2018-20



© Ashutosh Mallik, SFS 2018-20



19. Pea Blue **SCH-II**

Scientific Name: *Lampides boeticus* (Linnaeus, 1767)

Description: 24-36 mm. Tailed. Below, pale brown with broken basal, discal and post-discal white lines. A prominent post-discal whitish band. Underside of the hindwing two orange-crowned black tornal spots. Above, male pale purple-blue, female largely brown with variable amount of blue scalation.

Habitat: Seen at stream edges, open countryside, gardens, wet roads and agricultural fields. Altitudinal range from the foothills up to 3,500 m.

Habit: Flies fast, mud puddling by male, feeds on flower nectar. Lays eggs on various species of legumes (Fabaceae) including pea, as per its name Pea blue.

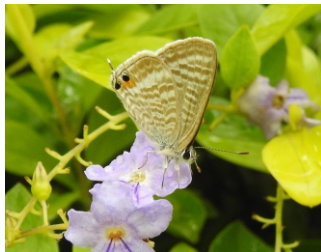
Larval Host Plant: Species of cultivated peas and beans, *Butea monosperma*, *Crotolaria sp.*, *Vigna sinensis*, *Pisum sativum*.

Status: Common



© Rohit Girotra

Source www.ifoundbutterfly.org



© Chandrashekar Patil, SFS 2018-20



20. Zebra Blue

Scientific Name: *Leptotes plinius* (Fabricius, 1793)

Description: 22-30 mm. Tailed. Below, dark brown with basal, discal and post-discal white lines. Pattern distinct and unmistakable. Underside of the hindwing two orange-crowned metallic tornal spots. Above, male violet blue, female largely brown with white discs with brown spots upperside of the forewing.

Habitat: Prefers open drier regions, but also seen at the edges of evergreen forests. Seen at the forest edges near streams and trickling water on roads. Altitudinal range from the foothills up to 2,200 m.

Habit: Fast fliers, sustained for long time in flight, more often seen around food plants and bushes. Males are territorial and aggressive, often seen chasing each other. Visits flower, damp patches, mud puddling with other Lycaenids.

Larval Host Plant: *Albizia sp.*, *Dalbergia sp.*, *Indigofera sp.*, *Sesbania sp.*, *Mimosa sp.*, *Plumbago zeylanica*, *Dyerophytum indicum*

Status: Common



© Rohit Girotra
Source www.ifoundbutterfly.org



© Ashutosh Mallik, SFS 2018-20



21. Pale-grass Blue

Scientific Name: *Pseudozizeeria maha* (Kollar, 1844)

Description: 26-30 mm. Tailless. Underside of the forewing having spot on mid-cell present. Above, male pale blue with dark borders; female basically blue, rest dark brown.

Habitat: Prefers open grassy areas, more abundant in hills, prefers forest paths, open countryside and near habitation amidst grass and shrubs. Distributed from plains up to the altitude of 2,500 m.

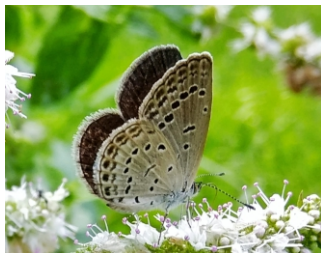
Habit: Weak flier, stays close to the ground on grassy patches. Visits flowers for nectar. Larger caterpillars occasionally attended by ants.

Larval Host Plant: *Strobilanthus sp.*, *Tephrosia sp.*, *Oxalis corniculata*

Status: Common



© Ashutosh Mallik, SFS 2018-20



© Ranjan Kumar Behera, SFS 2018-20



22. Dark Grass Blue

Scientific Name: *Zizeeria karsandra* (Moore, 1865)

Description: 18-24 mm. Tailless. Underside of the forewing having spot at mid-cell. Above, male deep blue with dark borders; female as in previous species. Generally smaller than previous species.

Habitat: Prefers grassy patches, bushes in the forest openings and scrubs. Altitudinal range from the foothills up to 2,430 m.

Habit: Weak fliers, Sun loving butterfly, stay close to the ground. Often in company of Pale-grass Blue.

Larval Host Plant: *Amaranthus spinosus*, *Zornia gibbosa*, *Polygonum plebejum*, *Tribulus terrestris*.

Status: Common



© Prabhu Datta Himansu Mishra, SFS 2018-20



© Ashutosh Mallik, SFS 2018-20



23. Common Quaker

Scientific Name : *Neopithecops zalmora* (Butler, 1870)

Description : 16-30 mm. Tailless, Rounded wings. Prominent costal spot near apex of the underside of the hindwing. Another smaller spot towards base. Brown with small or large white patch on disc of upperside of the forewing/hindwing, near apex.

Habitat : Seen along the tracks on low bushes and shrubs. Prefers stream banks, forest edges and tracks. Altitudinal range from the foothills up to 800 m.

Habit : Weak, fluttering flight. Feeds on flower nectar, animal dung and bird droppings. Males mud-puddle. Seen along forest tracks on low bushes and shrub. Recorded on the wing in March to July and September to December

Larval Host plant : Ginberry (Pilu)- *Glycosmis pentaphylla*

Status : Common



© Ashutosh Mallik, SFS 2018-20



© Ashutosh Mallik, SFS 2018-20



24. Large Oakblue

Scientific Name: *Arhopala amantes* (Hewitson, 1862)

Description: 45-57 mm. Hindwing tailed and lobed. Below, pale grey to brown, washed with lilac. Underside of the forewing having dark band below cell, towards costa extends to discal band. Greenish tornal scales. Above, both sexes shining blue; male with narrow dark border, female with broader border.

Habitat: Mostly a forest species prefers forested regions. Commonly at damp patches and occasionally on exuding tree sap. Altitudinal range from the foothills up to 2,000 m.

Habit: Flies extremely fast, usually on foliage, feeds on flowers nectar. Large congregation of males during mud puddling.

Larval Host Plant: *Terminalia* sp., *Lagerstroemia* sp., *Xylia xylocarpa*

Status: Common



© Prabhu Datta Himansu Mishra, SFS 2018-20



© Prabhu Datta Himansu Mishra, SFS 2018-20



25. Cornelian

Scientific Name : *Deudorix epijarbas* (Moore, 1858)

Description : 36-44 mm. Tailed and lobed hindwing. Forewing with pointed apex. Below, grayish brown. Both wings with darker brown cell-end bars and broad discal bands, outlined with white. Underside of the hindwing with yellow ringed black spot. Bluish scaling at tornus. Lobe, black-centered. Upperside of the forewing brown with orange disc and base in male. Upperside of the hindwing mostly orange with brown coastal patch.

Habitat : Occurs in forests as well as open plains, forest edges and gardens, often seen near larval food plant. Altitudinal range from the foothills up to 2,500 m.

Habit : Strong flier, both sexes feed on flower nectar and visit moist spaces.

Larval Host plant : *Aesculus indica*, *Litchi chinensis*, *Punica sp.*, *Sapindus marginatus*

Status : Common



© Suraj P. Singh
Source www.ifoundbutterfly.org



© Ashutosh Mallik, SFS 2018-20



26. Yamfly

Scientific Name: *Loxura atymnus* (Stoll, 1780)

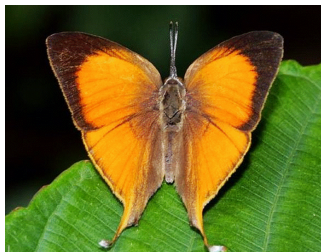
Description: 36-40 mm. Hindwing tornus produced into a long tail. Below, orange-yellow with obscure basal, discal and sub-marginal markings. Above, bright orange with black forewing apex.

Habitat: Avoids open places. Keeps to wet forests with bamboo at low elevation. Prefers low foliage along streams and forests tracks, but also visits gardens with larval food plant occasionally i.e. Yam (*Dioscorea sp.*) and *Smilax sp.* Altitudinal range from the foothills up to 2000 m.

Habit: Weak fluttering flight, fond of basking.

Larval Host Plant: *Dioscorea sp.*, *Smilax sp.*

Status: Common



© Milind Bhakare
Source www.ifoundbutterfly.org



© Ashutosh Mallik, SFS 2018-20



27. Slate Flash

Scientific Name: *Rapala manea* (Hewitson, 1863)

Description: 30-33 mm. Tailed and lobed. Below slate-grey to brown, sometimes purple-glossed. Double cell-end bar. Narrow, continuous, outwardly white-edged discal bands on both wings. Male-Upperside of the hindwing circular dark brown brand and behind its origin; this brand is often visible as a swollen patch, underside of the hindwing. Dark brown tuft. Above, male dark blue, female duller blue. Shows seasonal variation.

Habitat: Seen at stream edge and forest paths. Altitudinal range from the foothills up to 1,980 m.

Habit: Flies fast, most active during monsoon and post-monsoon period. Male visits moist soil. Often found on flowers and damp patches, resting on underside of leaves, caterpillars attended by ants.

Larval Host Plant: *Quisqualis indica*, *Antidesma acidum*, *Acacia pennata*, *Sorbaria sorbifolia*, *Camelia sinensis*.

Status: Common



© Gaurav Agavekar
Source www.ifoundbutterfly.org



© Ashutosh Mallik, SFS 2018-20



28. Common Silverline

Scientific Name: *Spindasis vulcanus* (Fabricius, 1775)

Description: 26-34 mm. Hindwing with two tails and a lobe. Below, yellowish with black-edged red bands and spots with silver centers. Underside of the forewing with short basal streak, usually conjoined to spot beyond. Basal, narrow streak along costa. Underside of the hindwing: outer, long basal band along v.1 continuous, not touching central band near tornus. Male- Upperside of the forewing brown with large orange discal patch with brown bands and spots.

Habitat: Prefers open countryside, gardens and open forest. Altitudinal range from the foothills up to 2700 m.

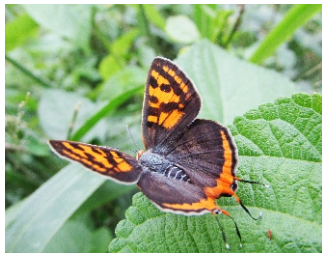
Habit: Flight extremely fast, keeps low to bushes. Fond of flowers, bird droppings, damp patches. Crematogaster ants have been recorded tending to its caterpillars.

Larval Host Plant: *Zizyphus sp.*, *Clerodendrum sp.*, *Canthium sp.*, *Cadaba fruticosa*

Status: Common



© Ashutosh Mallik, SFS 2018-20



© Ashutosh Mallik, SFS 2018-20

FAMILY: NYMPHALIDAE (BRUSH FOOTED BUTTERFLIES)

The largest family of butterfly with around 6000 species worldwide, of which more than 461 species are recorded from India. The forelimbs of Nymphalids are reduced to brush like appendages and termed as brush-footed butterflies. Many of these are powerful fliers. Feed on animal carcasses, animal dropping, urine, flower nectar and over-ripe fruit.



© Chandrashekhar Patil, SFS 2018-20



29. Angled Castor

Scientific Name: *Ariadne ariadne* (Linnaeus, 1763)

Description: 45-60 mm. Sexes similar, Forewing margins angled, and hindwing margins are crenulate. Dark line across forewing highly angled in middle.

Habitat: More often seen in open areas, near to its host plant Castor. Forest edges near habitation. Altitudinal range from the foothills up to 2,300 m.

Habit: Slow sailing, jerky irregular flight. Bask on upper surface of the leaves.

Larval Host Plant: *Ricinus communis*, *Tragia* sp.

Status: Common



© Susanta Kumar Jena, SFS 2018-20



© Aishwary Mandal
Source www.ifoundbutterfly.org



30. Common Castor

Scientific Name: *Ariadne merione* (Cramer, 1777)

Description: 45-60 mm. Sexes similar. Wing margins not highly angled. Dark line on forewing not highly angled. Tawny above and below. Shows seasonal variations in colour and markings.

Habitat: Prefers forest edges, gardens, usually near food plants. More common during pre and post-monsoon period. Altitudinal range from the foothills up to 2,500 m.

Habit: Flight weak, jerky, often sailing nearer to ground. Nectar feeder, sap of the plants and overripe fruits.

Larval Host Plant: *Ricinus communis*, *Tragia* sp.

Status: Common



© Ashutosh Mallik, SFS 2018-20



© Shashidhar Hiremath
Source www.ifoundbutterfly.org



31. Common Nawab (Indian Nawab)

Scientific Name : *Charaxes bharata* (Felder and Felder, 1867)

Description : 60-75 mm. Hindwing with two tails. Upperside of the forewing with yellowish discal band. Narrow band inwardly bordering the yellowish-green discal band, dark olive or mossy-green to purplish brown near wing base and reddish at its extremities of underside of the forewing and hindwing. Band width above and below varies with seasons and individually

Habitat : Forest loving often seen basking on tree tops. Seen along forest paths when it visits damp patches, oozing sap and dead land crabs. Altitudinal range from the foothills up to 1,900 m.

Habit : Powerful flier. Feeds on bird and animal dropping, and animal carcasses. Males mud-puddle, often in company of other nawabs.

Larval Host plant : *Delonix regia*, *Acacia chundra*, *Acacia pennata*, *Adenanthera pavonina*, *Albizia lebbek*, *Ceasalpinia bonduc*

Status : Common



© Ashutosh Mallik, SFS 2018-20



© Ashutosh Mallik, SFS 2018-20



32. Common Map (Map Butterfly)

Scientific Name: *Cyrestis thyodamas* (Doyere, 1840)

Description: 50-60 mm. Prominent tail at hindwing, upperside of the wing white coloured with map like lines and tawny yellow Markings. Dimorphic: under side pale white in male and pale yellow in female with black veins.

Habitat: Generally bask at canopy level, occasionally underside of leaf, prefers forest and stream edges. Altitudinal range from the foothills up to 2,000 m.

Habit: Jerky flight, gliding often, visit animal droppings and moist patches.

Larval Host Plant: *Ficus sp.*

Status: Common



© Ashutosh Mallik, SFS 2018-20



© Ashutosh Mallik, SFS 2018-20



33. Plain Tiger

Scientific Name: *Danaus chrysippus* (Linnaeus, 1758)

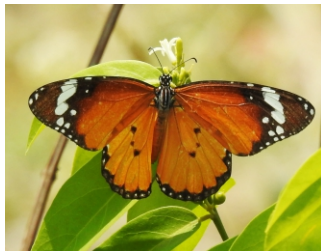
Description: 70-80 mm. Tawny, without stripes. White band across black apex.

Habitat: Prefers open countryside and forest edges. Altitudinal range from the foothills up to 2,500 m.

Habit: Slow flight, close to ground, feeds on flower nectar, occasionally on damp patches, large congregation on plant roots, known for migration. Foul smelling and bitter tasting to predators.

Larval Host Plant: *Asclepias curassavica*, *Frerea indica*

Status: Common



© Prabhu Datta Himansu Mishra, SFS: 2018-20



© Ashutosh Mallik, SFS: 2018-20



34. Striped Tiger

Scientific Name: *Danaus genutia* (Cramer, 1779)

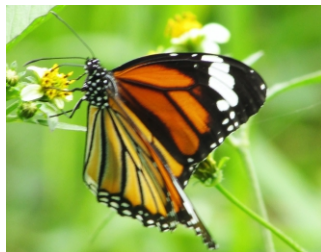
Description: 75-95 mm. Above and below, tawny with black veins. Upperside of the forewing having black apex with a prominent white band.

Habitat: Can be seen in variety of habitat from wet evergreen forest to scrub forest, open forest and edges. Altitudinal range from the foothills up to 2,600 m.

Habit: Slow flight, close to ground, feeds on flower nectar, comes near water occasionally, large congregation on plant roots, known for migration. Foul smelling and bitter tasting to predators.

Larval Host Plant: *Asclepias curassavica*, *Tylophora tenuis*, *Ceropegia sp.*, *Cynanchum sp.*, *Marsdenia roylei*, *Stephanotis sp.*, *Cynanchum sp.*

Status: Common



© Ashutosh Mallik, SFS 2018-20



© Prabhu Datta Himansu Mishra, SFS 2018-20



35. Common Crow

Scientific Name: *Euploea core* (Cramer, 1780)

Description: 85-95 mm. Dark velvety butterfly with two rows of marginal cream coloured spots, inner row of spots being larger than outer.

Habitat: Prefers forest clearings and open countryside. Altitudinal range from the foothills up to 2,500 m.

Habit: Slow flight, Male visits moist spots. Fond of flower nectar like Lantana and Ageratum. Large congregation for feeding on roots and other damage part of plants. Foul smelling and bitter tasting.

Larval Host Plant: *Ficus sp.*, *Nerium oleander*, *Holarrhena pubescens*, *Hemidesmus indicus*, *Tylophora indica*

Status: Common



© Prabhu Datta Himansu Mishra, SFS 2018-20



© Chandrashekar Patil, SFS 2018-20



36. Blue Tiger

Scientific Name: *Tirumala limniace* (Cramer, 1775)

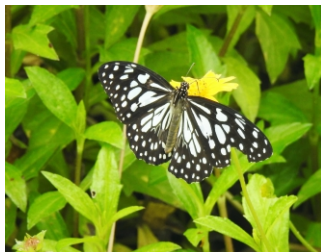
Description: 90-100 mm. Black butterfly with dark brown abdomen, pale blue to white markings, cells on hindwing are paler compared to forewings.

Habitat: Up to 2,000 m of altitude. Prefers flowers and wet patches of forest, gardens and lightly wooded areas.

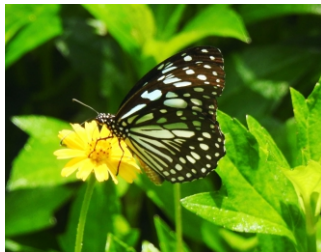
Habit: Slow and gliding flight, nectar feeder. Male occasionally visit moist soil. Bitter tasting and foul smelling. Communal roosting observed.

Larval Host Plant: *Asclepias curassavica*, *Ageratum conyzoides*, *Celosia argentea*, *Heliotropium indicum*, *Crotalaria retusa*, *Calotropis procera*

Status: Common



© Prabhu Datta Himansu Mishra, SFS 2018-20



© Prabhu Datta Himansu Mishra, SFS 2018-20



37. Tawny Coster

Scientific Name: *Acraea terpsicore* (Fabricius, 1758)

Description: 50-65 mm. Upperside brick red or orange with narrow black border along outer wing edge on forewing. On hindwing, black border is broader with white spots. Black spots on cell and mid-region of both wings. Sexes alike.

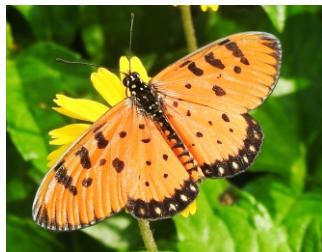
Habitat: Forest clearings, open country and gardens, found from plains to foothills. Altitudinal range from the foothills up to 2,000 m.

Habit: Slow fluttering flight, not so high, foul smelling and bitter tasting, plays dead when caught and exudes bad smelling yellow fluid from glands at leg joints. Nectar feeder. After mating, formation of hard pouch at abdominal tip of female to prevent further mating.

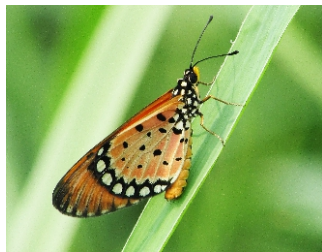
Larval Host Plant: Members of Cucurbitaceae family (Cucumber), Members of Passifloraceae family (Passion Flower), *Modeccap almata*, *Aporosa lindleyana*

Nectar Plant: *Lantana sp.*

Status: Common



© Chandrashekhar Patil, SFS 2018-20



© Chandrashekhar Patil, SFS 2018-20



38. Indian Fratillary (Tropical Fratillary)

Scientific Name: *Argyreus hyperbius* (Linnaeus, 1763)

Description: 65-85 mm. Similar to Plain Tiger and Leopard Lacewing. Upperside of the forewing apical area broadly dark blue with white band across. Silver stripes on underside of the hindwing irregular; broken into separate spots.

Habitat: Seen along the roads, gardens, open countryside and forest edges. Altitudinal range from the foothills up to 3,000 m.

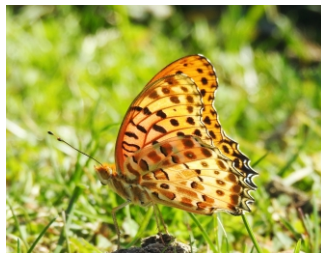
Habit: Fast fliers, feeds on flower nectar, fond of basking. Inhabits hilly areas, migrates to plain in winter.

Larval Host Plant: *Viola betonicifolia* and other members of family *Violaceae*.

Status: Common



© Chandrashekhar Patil, SFS 2018-20



© Chandrashekhar Patil, SFS 2018-20



39. Rustic

Scientific Name: *Cupha erymanthis* (Drury, 1773)

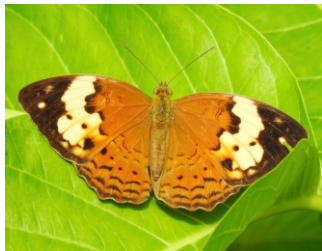
Description: 50-60 mm. Upperside of the forewing has basal area reddish brown, a broad yellow or white central band, and broad black apex. Two darker marginal lines of crescents on upperside of the forewing. Sexes similar.

Habitat: Prefers forest habitats, shady stream, can also be seen in gardens near forest edges. Frequently found at heavy rainfall areas. Altitudinal range from the foothills up to 2,130 m.

Habit: Flies fast, flies near shrubs, and tree tops. Feed on nectar and bask in mid-canopy of tree. Male visits moist soil occasionally and of territorial nature.

Larval Host Plant: *Flacourtia indica*, *Flacourtia montana*

Status: Common



© Chandrashekar Patil, SFS 2018-20



© Rohit Girotra

Source www.ifoundbutterfly.org



40. Common Leopard

Scientific Name: *Phalanta phalantha* (Drury, 1773)

Description: 50-60 mm. Pale tawny or dark yellow above with black spots. Four dark lines in cell of upperside of the forewing. Underside of the forewing and hindwing have purple-glossed in fresh specimens of wet season form.

Habitat: Prefers forest edges, clearings, open countryside and gardens, less preference to denser forests. Altitudinal range from the foothills up to 2,300 m.

Habit: Fast flier, territorial and aggressive. Fond of flower nectar, visits damp patches. More abundantly seen during pre-monsoon and early monsoon periods.

Larval Host Plant: *Xylosoma longifolium*, *Flacourtia* sp.

Nectar Plant: *Lantana* sp.

Status: Common



© Prabhu Datta Himansu Mishra, SFS 2018-20



© Prabhu Datta Himansu Mishra, SFS 2018-20



41. Grey Count

Scientific Name: *Tanaecia lepidea* (Butler, 1868)

Description: 65-85 mm. Upperside dark brown with pale grey border. Border broad on hindwing and narrow on forewing, ending before apex. Forewing apex produced and outer edge incurved.

Habitat: Widely distributed in moist forested region, seen at stream edges at open forest areas. Altitudinal range from the foothills up to 2,000 m.

Habit: Strong fliers, fond of basking on the ground and lower canopy, feeds on rotting fruits and tree sap.

Larval Host Plant: *Melastoma sp.*, *Careya arborea*

Status: Common



© Prabhu Datta Himansu Mishra, SFS 2018-20



© Shreya G. Rao
Source www.ifoundbutterfly.org



42. Baron

Scientific Name : *Euthalia aconthea* (Cramer, 1777)

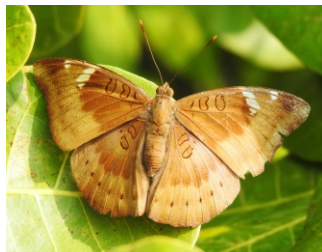
Description : 55-80 mm. Upperside brown, with olive green sheen. Hindwing outer discal band composed of small black spots. Female with lighter colouration than male with larger black spots, but lacks white spotting beyond cell on upper forewing. Pale spots on forewing are variable.

Habitat : Wide range of habitat except dry scrub and grass land, prefers stream edge in dense forest, as well as gardens and fruit orchards with common larval food plants. Altitudinal range from foothills up to 2,400 m.

Habit : Strong and rapid flight, close to ground, fond of basking, visits rotting fruits, moist soil and animal droppings irrespective of sex.

Larval Host Plant : *Mangifera indica*, *Anacardium occidentale*, *Bryonia sp.*, *Streblus asper*

Status : Common



© Nilendra Narayan Singh Dalapati, SFS 2018-20



© Nilendra Narayan Singh Dalapati, SFS 2018-20



43. Baronet

Scientific Name : *Symphaedra nais* (Forster, 1771)

Description : 60-70 mm. Above, tawny with black markings. Wing margins black, chequered with white. Below, tawny-brown with white post-discal and pale yellow discal markings. Underside of the hindwing with white discal band which may be reduced or absent.

Habitat : Openings and edges in deciduous forest, damp patches and dry habitat also. Altitudinal range from the foothills up to 900 m.

Habit : Not a powerful flier, it often takes to wing, only to settle again, a short distance away. Usually keeps to low bushes, attracted to rotting fruit and visits moist soil.

Larval Host plant : *Shorea robusta*, *Diospyros melanoxylon*

Status : Common



© Prabhu Datta Himansu Mishra, SFS 2018-20



© Prabhu Datta Himansu Mishra, SFS 2018-20



44. Commander

Scientific Name : *Moduza procris* (Cramer, 1777)

Description : 60-75 mm. Above, tawny red with black edged, white discal band on forewing and hindwing. Underside of the hindwing with markings as above, but ground colour whitish.

Habitat : Prefers shady nullahs, damp patches in moist deciduous to evergreen forests. Altitudinal ranges from the foothills up to 1,000 m.

Habit : Flies fast. Visits moist soil. Basks on upper surfaces of leaves on low bushes. Seen along stream edges and forest tracks. Male territorial, Comes to damp patches as well as flowers.

Larval Host plant : *Hedyotis orixense*, *Mitragyna parviflora*, *Mussaendra frondosa*, *Neolamarckia cadamba*, *Wendlandia exserta*.

Status : Common



© Mohan Hembram, SFS 2018-20



© Mohan Hembram, SFS 2018-20



45. Common Sailer

Scientific Name: *Neptis hylas* (Linnaeus, 1758)

Description: 50-60 mm. Black butterfly with white markings. Costal streak in discal band on upperside of the forewing is short, and discal spot in end cell outwardly sharp. Upper hindwing discal band does not widen towards costa. Underside chestnut, with white markings, sharply edged with black.

Habitat: Prefers open countryside, forest edges, gardens. Can be seen in well-watered deciduous as well as evergreen forest. More frequently can be seen after rain. Altitudinal range from the foothills up to 3000 m.

Habit: Graceful sailing flight, followed by short wing-beats. Fond of basking on upper surface of leaves, feeds on flower nectar, visit to water.

Larval Host Plant: *Dalbergia sp.*, *Pongamia sp.*, *Xylia dolabritormis*, *Bombax sp.*, *Zizyphus sp.*, *Elaeocarpus sp.*, *Grewia sp.*, *Thespesia sp.*

Status: Common



© Mohan Hembram, SFS 2018-20



© Prabhu Datta Himanshu Mishra, SFS 2018-20



46. Great Eggfly

Scientific Name: *Hypolimnias bolina* (Linnaeus, 1758)

Description: 70-110 mm. Under side chocolate brown coloured, sexually dimorphic. Male upper part black with white centred iridescent blue oval spot on both wing. Upper hindwing oval spot is bigger as compared to spot at forewing. Female with a broader wing, concave termen and scalloped hindwing border. Only two blue spots at forewing, a row of white spots along margin from apex to lower tip.

Habitat: Prefers forest openings and edges, specially wet forest areas, bushes, roadsides and gardens. Altitudinal range from the foothills up to 2,100 m.

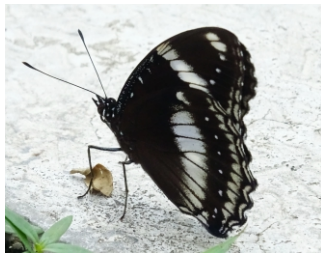
Habit: Strong and fast fliers, flies along the undergrowth and along streams inside forest. Fond of basking, feeds on nectar of flower. Males territorial and aggressive, Female mimics Common Crow butterfly.

Larval Host Plant: *Hibiscus* sp., *Sida rhombifolia*, *Laportae interrupta*

Status: Common



© Ashutosh Mallik, SFS 2018-20



© Ashutosh Mallik, SFS 2018-20



47. Danaid Eggfly SCH-I

Scientific Name: *Hypolimnas misippus* (Linnaeus, 1764)

Description: 70-85 mm. Below tawny (yellowish-brown coloured), sexually dimorphic. Male upperside black with white oval shaped patches on both wings, a small oval spot on the upperside of the forewing apex. Female mimics plain tiger, and differ due to its wavier white margin on hindwing.

Habitat: Generally seen in open countryside, gardens, forest tracks and edge of streams. Altitudinal range from the foothills up to 3,000 m.

Habit: Strong and fast fliers, fond of basking. Feeds on flower nectar.

Larval Host Plant: *Hibiscus sp.*, *Abutilon sp.*, *Asystasia lawiana*, *Barleria cristata*, *Abelmoschus sp.*, *Portulaca oleracea*

Status: Common



© Ashutosh Mallik, SFS 2018-20



© Rohit Girotra
Source www.ifoundbutterfly.org



48. Peacock Pansy

Scientific Name: *Junonia almana* (Linnaeus, 1758)

Description: 60-65 mm. An orange coloured butterfly, with two prominent peacock eyespots, one on upper forewing and upper hindwing each. The larger eyespot is on hindwing. Upperside of the forewing is having square cut apex and concave termen.

Habitat: Prefers waterside vegetations, scrub and forest edges, forest tracks and gardens. Altitudinal range from the foothills up to 2,100 m.

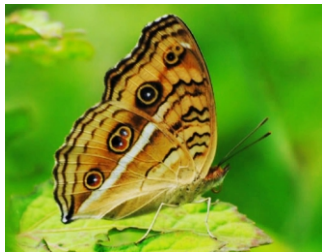
Habit: Graceful, sailing flight, feeds on flower nectar, used to basks on rock and leaves. Males are territorial.

Larval Host Plant: *Barleria sp.*, *Hygrophila auriculata*, *Phyla nodiflora*.

Status: Common



© Santosh Thakur, FG, Shimla, HP



© Rohit Girotra
Source www.ifoundbutterfly.org



49. Grey Pansy

Scientific Name: *Junonia atlites* (Linnaeus, 1763)

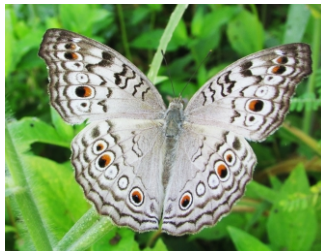
Description: 55-65 mm. Upper side grey with dark lines and series of black centred, white ringed discal eyespots on both wings. Some of eyespots partly filled with orange. Under side grey with blur eyespots as above. Some seasonal variation in underside markings.

Habitat: Can be seen in heavy rainfall regions. Prefers open area with water, like freshwater marshes, ponds, paddy fields and forest openings. Altitudinal range from the foothills up to 1,500 m.

Habit: Flies close to ground and low. Feeds on nectar of flower including weeds like Lantana and Ageratum.

Larval Host Plant: *Barleria sp.*, *Strobilanthes sp.*, *Hygrophila auriculata*

Status: Common



© Ashutosh Mallik, SFS 2018-20



© Ashutosh Mallik, SFS 2018-20



50. Yellow Pansy

Scientific Name : *Junonia hierta* (Fabricius, 1798)

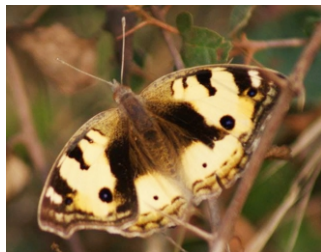
Description : 55-80 mm. Apex produced. Above, Dark brown with paler discal and post-discal bands. Four dark lines in cell and dark brown cell-end marking which extends into a narrower discal band. Below, dark chocolate brown, often tinged with lilac in wet season morph. Dry season morph duller brown. Small post discal eye spots, above and below on FW and HW, which may be obscure.

Habitat : Gardens, forest racks and scrub forest. Altitudinal range from the foothills up to 2,000 m.

Habit : Active butterfly. Flies close to the ground. Prefers sunny places. Fond of dry stony riverbeds, uncultivated agricultural fields and forest roads. Fond of flowers. Male territorial. Known to be migratory.

Larval Host plant : *Asteracantha*, *Barleria*, *Strobilanthes*, *Hygrophila auriculata*, *Ruellia prostrata*

Status : Common



© Archana Rawat, SFS 2019-21



© Soma Basu De
Source www.ifoundbutterfly.org



51. Chocolate Pansy

Scientific Name: *Junonia iphita* (Cramer, 1779)

Description: 55-80 mm. Brown butterfly with paler outer areas. Upper side brown with dark brown bands. Upper hindwings with rows of small eyespots, upper forewing with or without small eyespots. Forewing apex square cut end with concave termen. Underside of butterfly gives leafy appearance.

Habitat: Prefers deciduous forests, seen in gardens, forest tracks and scrub forest. Altitudinal range from the foothills up to 2,000 m.

Habit: Swift flight, close to ground, active during the hottest part of the day. Like flowers and wet ground.

Larval Host Plant: *Asteracantha* sp., *Barleria* sp., *Strobilanthes* sp.

Status: Common



© Chandrashekhar Patil, SFS 2018-20



© Rohit Girotra
Source www.ifoundbutterfly.org



52. Lemon Pansy

Scientific Name: *Junonia lemonias* (Linnaeus, 1758)

Description: 40-60 mm. Brown coloured wings, with purple centred, orange ringed, black eyespots on both wings called peacock eyespot. Upper forewing has many lemon yellow spots.

Habitat: Probably the commonest of all pansies in India. Can be seen in gardens, open agricultural areas, forest openings, forest tracks throughout the year. Altitudinal range from the foothills up to 2,000 m.

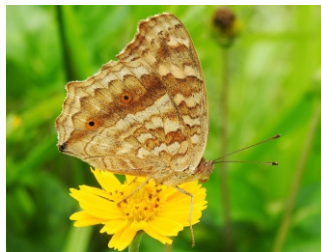
Habit: Low flight, close to the ground around flowering shrubs and herbs. Feeds on nectar, some time visits wet grounds.

Larval Host Plant: *Barleria sp.*, *Justicia sp.*, *Sida rhombifolia*.

Status: Common



© Amrit Anjan Sahoo, O.U.A.T



© Chandrashekhar Patil, SFS 2018-20



53. Blue Pansy

Scientific Name: *Junonia orithya* (Linnaeus, 1758)

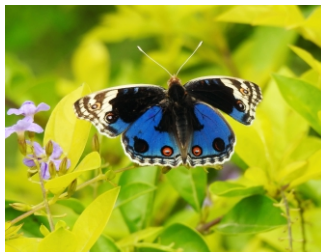
Description: 45-60 mm. Brilliant blue upperside of the hindwing, velvet black upperside of the forewing, pale apex with white bands. Pair of blue centred red eyespots on all wings. Females are larger with more prominent eyespot and more extensive basal area as compared to male.

Habitat: Prefers drier open grassy plains, but can be seen along the forest edge, scrub forest and in gardens. Altitudinal range from the foothills up to 2,100 m.

Habit: Swift flight, close to ground, active during the hottest part of the day. Like flowers and wet ground. Visits damp patches and animal urine, male are territorial.

Larval Host Plant: *Mimosa pudica*, *Justicia procumbens*, *Justicia migranthes*, *Lepidagathis prostrate*, *Nelsonia campestris*, *Sida rhombifolia*.

Status: Common



© Malini E., SFS 2018-20



© Prabhu Datta Himansu Mishra, SFS 2018-20



54. Orange Oakleaf

Scientific Name: *Kallima inachus* (Doyere, 1840)

Description: 85-110 mm. Underside appeared like a dry leaf, forewing with pointed apex and tornus. Upperside bright iridescent blue, upperside of the forewing with black apex and orange central band. Exhibit seasonal variation in marking of under side.

Habitat: Flies within the undergrowth and along forest streams, prefers dense hill forests with good rainfall and moisture. Altitudinal range from the foothills up to 2,000 m.

Habit: Powerful dipping flight, fond of basking, often seen resting on tree trunks and dry leaves, resembling to a dry leaf. Attracted to over ripe, rotting fruit, tree sap and damp patches.

Larval Host Plant: *Strobilanthus sp.*

Status: Rare



© Prabhu Datta Himansu Mishra, SFS 2018-20



© Chandrashekhar Patil, SFS 2018-20



55. Indian Tortoiseshell

Scientific Name: *Aglais caschmirensis* (Kollar, 1844)

Description: 55-65 mm. Upperside of the hindwing has submarginal blue-centred black spots inwardly bordered brownish. Upperside of the hindwing basal half dark, yellow-edged outwardly. Hindwing toothed. Tawny colour and black marginal band on Upperside fading outwards. Black irregular patches on upperside of the forewing. Underside dark.

Habitat: One of the commonest among Himalayan Butterfly, can be seen throughout the year in varied habitat except in deep forest. Often seen near to host plant. Altitudinal range from the foothills up to 5,360 m.

Habit: Flies with rapid wing beats, flies close to ground. A Sun loving butterfly, fond of basking on leaves and rocks. Males are territorials and aggressive.

Larval Host Plant: *Urtica sp.*

Status: Common



© Prabhu Datta Himansu Mishra, SFS 2018-20



© Suhas R.K

Source www.ifoundbutterfly.org



56. Common Jester

Scientific Name: *Symbrenthia lilaea* (Hewitson, 1864)

Description: 45-55 mm. Toothed hindwing. Below dark yellow with ferruginous brown markings. A narrow, brown band from hindwing dorsum to forewing termen. Above dark brown with orangish-yellow bands.

Habitat: Seen at stream edges, gardens and forest edges. Altitudinal range from the foothills up to 1,900 m.

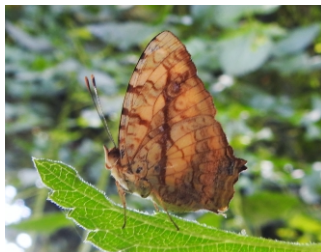
Habit: Graceful and gliding flight, visits moist soil, wall, rocks individually and sometime in large congregations. Feeds on flower nectar.

Larval Host Plant: *Debregeasia bicolor* and other members of *Urticaceae* family.

Status: Common



© Ashutosh Mallik, SFS 2018-20



© Ashutosh Mallik, SFS 2018-20



57. Painted Lady

Scientific Name: *Vanessa cardui* (Linnaeus, 1758)

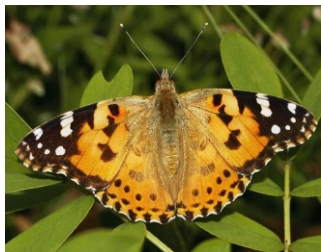
Description: 55-70 mm. Upperside of the forewing black apex has three white conjoined spots and four submarginal white spots; pinkish red central area; golden brown base. Upperside of the forewing has three central black spots on the red area. Underside cryptically marked.

Habitat: Prefers open grassy plains, gardens, open countryside, forest edges, hill slopes, alpine meadows. Altitudinal range from the foothills up to 4,500 m.

Habit: Fast and swift fliers, feeds on flower nectar, visits over ripened fruits and rotting flower.

Larval Host Plant: *Artemesia sp.*, *Blumea sp.*, *Zornia gibbosa*, *Debregeasia bicolor*, *Girardinia diversifolia* and other members of *Asteraceae*, *Fabaceae*, *Urticaceae* family.

Status: Common



© Chandrashekhar Patil, SFS 2018-20



© Chandrashekhar Patil, SFS 2018-20



58. Indian Red Admiral

Scientific Name: *Vanessa indica* (Herbst, 1794)

Description: 55-65 mm. Upperside dark brown. Upperside of the hindwing with black spotted reddish orange band near outer edge. Upperside of the forewing basal dark area extends up to the three central black spots.

Habitat: Palaearctic butterfly, seen in and around forests and gardens. Prefers stream edges near forest, roadside and grassy meadows. More oftenly seen near larval host plant like *Urtica sp.* Altitudinal range from the foothills up to 4,000 m.

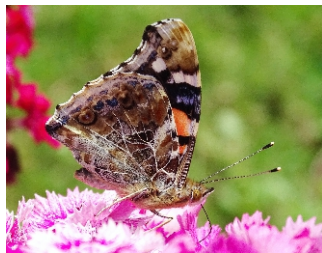
Habit: Strong flier, often settling on the ground with half opened wings, attracted to rotten fruits and visit flowers.

Larval Host Plant: *Urtica dioica*, *Boehmeria sp.*, *Girardinia diversifolia*

Status: Common



© Chandrashekhar Patil, SFS 2018-20



© Ashutosh Mallik, SFS 2018-20



59. Common Palmfly

Scientific Name: *Elymnias hypermnestra* (Linnaeus, 1763)

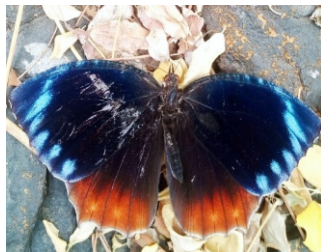
Description: 60-80 mm. Forewing pointed and hindwing toothed. Upperside of the forewing is dark brown with marginal row of bluish spots. Upperside of the hindwing is with broad chestnut margin. Female mimics Striped Tiger (*D. genutia*) in appearance and flight.

Habitat: Seen at stream edges, gardens and open forest. Prefers to be remains under shade. Altitudinal range from the foothills up to 1,500 m.

Habit: Weak and fluttering flight, often settling with closed wing. Usually found near its larval host plants of family Arecaceae. Males are more common, female mimics Striped Tiger. Visits over ripened fruits and animal urine.

Larval Host Plant: *Areca sp.*, *Phoenix sp.*, *Calamus sp.*, *Cocos nucifera*, *Arenga wightii*

Status: Common



© Fahim Khan

Source www.ifoundbutterfly.org



© Ashutosh Mallik, SFS 2018-20



60. Common Evening Brown

Scientific Name : *Melanitis leda* (Linnaeus, 1758)

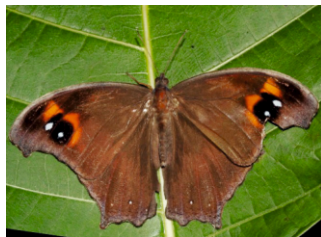
Description : 60-80 mm. Underside pale grey with dark striations in wet season form. Series of white-pupilled eye spots on underside of the wings. Two black eye spots with large white pupils surrounded by orange patches near upperside of the forewing apex. Hindwing slightly tailed. Eye spots on underside reduced in dry season form. Forewing angled in male, falcate in female. Underside of the hindwing eye spots small or indistinct.

Habitat : Prefers open forests, gardens, forest clearings. Altitudinal range from the foot hills up to 2,300 m.

Habit : Jerky flight, close to the ground, but rapid-irregular flight when disturbed. Settled quickly in the undergrowth or on ground, amidst drier lives, attracted towards light, active at dusk. Visit over ripened fruits.

Larval Host Plant : *Panicum sp.*, *Sorghum sp.*, *Zea mays*, *Apluda sp.*, *Oryza sativa* and other members of Poaceae family.

Status : Common



© Tarun Karmakar
Source www.ifoundbutterfly.org



© Ashutosh Mallik, SFS 2018-20



61. Common Treebrown

Scientific Name: *Lethe rohria* (Fabricius, 1787)

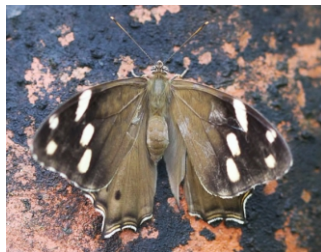
Description: 58-70 mm. White band on apex below underside of the forewing. Underside of the hindwing has elongated and distorted eyespots, only one undistorted apical eyespot with white pupil, which is larger than the lower eyespots. White band on upperside of the forewing in female is absent.

Habitat: Can be seen in forest as well as open country side of hilly areas, forest edges. Altitudinal range from the foot hills up to 3,000 m.

Habit: Weak flight, often close to ground, bushes, shrubs, tree trunks. Never flies for long, settling amongst bushes and shrubs. Shade loving, more active during early morning and evenings. Rarely visit flower. Visits rotting fruits, animal droppings.

Larval Host Plant: *Imperata cylindrica*, *Microstegium ciliatum*, *Apluda sp.*, *Capillipedium sp.* and several other members of *Poaceae* family.

Status: Common



© Milind Bhakare
Source www.ifoundbutterfly.org



© Ashutosh Mallik, SFS 2018-20



62. Long-branded Bushbrown

Scientific Name: *Mycalesis visala* (Moore, 1858)

Description: 45-55 mm. Two eyespots on upperside of the forewing, smaller eyespots may be present. Seven eyespots on underside of the hindwing. Brown brand on male underside of the hindwing, pale brown brand on upperside of the hindwing. Wet season form: Apex and outer edge more rounded.

Habitat: Seen in gardens, forest tracks, forest edges, near grasses and low foliage. Altitudinal range from the foot hills up to 1,340 m.

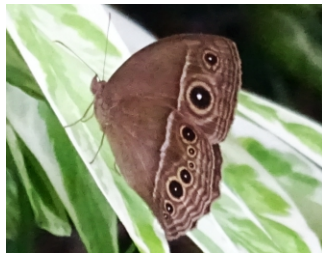
Habit: Slow flight, shade loving, settling amidst the shrubs and undergrowth. Lays eggs in various species of grasses.

Larval Host Plant: Grasses

Status: Uncommon



© Ashutosh Mallik, SFS 2018-20



© Susanta Kumar Jena, SFS 2018-20



63. Common Fourring

Scientific Name: *Ypthima huebneri* (Kirby, 1871)

Description: 30-40 mm. Small sized Ring. Single apical ocellus underside of the hindwing. Three tornal ocelli in line. Yellow ringed ocellus on upperside of the forewing. Reduced ocelli on underside of the forewing in dry season form. Seasonal variation observed.

Habitat: Prefers both forested and open hills, open forest, can also be seen mixed deciduous forests, gardens and grasslands. Altitudinal range from the foot hills up to 1,500 m.

Habit: Weak, bouncing flight, close to the grasses and shrubs, nectar feeder, visit moist soil.

Larval Host Plant: *Poaceae* members.

Status: Common



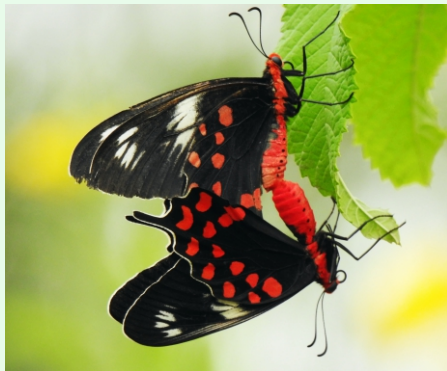
© Chandrashekhhar Patil, SFS 2018-20



© Chandrashekhhar Patil, SFS 2018-20

FAMILY: PAPILIONIDAE (SWALLOWTAILS)

The most spectacular group of butterfly and most studied. Majority of the butterfly of this group have tailed hindwings, hence called as Swallowtails. 107 species occurred in India out of 573 recorded species in the world. These are the large, black or red bodied butterflies and are strong fliers, like Crimson Rose which migrates from India to Sri Lanka across the Sea. The largest butterfly of the world is from this group named Southern Birdwing which is endemic to Western Ghats. Most of these are found in hilly areas, but some usually occurred in the plains. *Citrus sp.* is main larval host plants for this group. Butterfly collection and habitat loss are the main threats to these butterflies.



© Malini E., SFS 2018-20



64. Common Rose

Scientific Name : *Pachliopta aristolochiae* (Fabricius, 1775)

Description : 80-110 mm. Red bodied, tailed swallow tail. Pale greyish stripes between veins on underside of forewing, five elongated white patched spots at middle region of hindwing, presence of bright red or brownish red spots on outer edge of hindwing.

Habitat : Altitudinal range from the foothills up to 2,400 m.

Habit : Slow but straight fluttering flight, usually 3 to 4 m. above ground, can fly higher. Fond of flower nectar and water. Foul smelling and bitter testing to predators. Males do mud-puddling.

Larval Host Plant : Climbers and Creepers of *Aristolochia* genus, like *Aristolochia indica*, *Aristolochia bracteolata*, *Aristolochia elegans*.

Status : Common



© Ashutosh Mallik, SFS 2018-20



© Malini E., SFS 2018-20



65. Common Mormon

Scientific Name : *Papilio polytes* (Linnaeus, 1758)

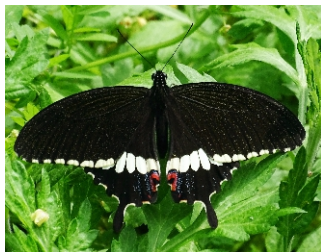
Description : 90-100 mm. Tailed, velvety black bodied swallowtail, with a row of white spots along central region of upper hindwing and forewing margin have a series of white spots in male. Dull red or orange marginal crescent (semi-circular) spots usually present on under hindwing. Female similar to male with prominent red marginal crescents strongly marked on hindwing, without any red markings on body.

Habitat : Altitudinal range from the foothills up to 1,830 m.

Habit : Males have fast and powerful flight, while female fly slowly in a leisurely manner. Fond of flower for nectar, male visits damp patches and animal dung, Males do mud-puddling. Female mimics common and Crimson rose.

Larval Host Plant : *Murraya koenigii*, *Citrus sp.*, *Aegle marmelos*, *Glycosmis arborea*.

Status : Common



© Ashutosh Mallik, SFS 2018-20



© Ashutosh Mallik, SFS 2018-20



66. Lime Swallowtail

Scientific Name : *Papilio demoleus* (Linnaeus, 1758)

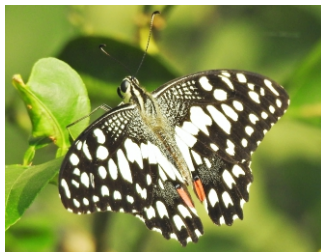
Description : 80-100 mm. Tailless, black and yellow spotted swallow tail. Upper and under hindwings have tornal redspots. Apical black and blue spots on hindwing.

Habitat : Commonest among the swallow tails and most widely distributed. Seen in lightly wooded areas and gardens and farmlands, specially at the place with its larval host plants like *Citrus sp.* Altitudinal range from the foothills up to 2,130 m.

Habit : Fast flier, with jerking flying. Feeds on nectar of flowers, often seen mud-puddling in large number on damp patch during summer.

Larval Host Plant : *Citrus sp.*, *Aegle marmelos*, *Murraya koenigii*, *Limonia crenulata*, *Glycosmis arborea*.

Status : Common



© Prabhu Datta Himansu Mishra, SFS 2018-20



© Ashutosh Mallik, SFS 2018-20



67. Common Mime

Scientific Name : *Papilio clytia* (Linnaeus, 1758)

Description : 90-100 mm. Black bodied, tailless swallowtail, with creamy white broad stripes above. Prominent yellow marginal spots on under hindwing. Both sexes mimic Common Tiger butterfly, while form *dissimilis*, both sexes mimic Blue Tiger butterfly.

Habitat : Seen in wooded area with flower, prefers gardens, forest edges and forest tracks. Altitudinal range from the foothills up to 2,500 m.

Habit : More abundant during pre-monsoon and monsoon period. Normal flight, like Sailing with fluttering, but flight fast on alarmed condition. Feeds on flower nectar. Mud- puddling by males.

Larval Host Plant : *Cinnamomum zeylanicum*, *Litsea* sp., *Alseodaphne semecarpifolia*

Status : Common



© Amrit Anjan Sahoo, O.U.A.T



© K. Saji

Source www.ifoundbutterfly.org



68. Common Jay

Scientific Name : *Graphium doson* (Felder and Felder, 1864)

Description : 70-80 mm. Tailless butterfly with white and black striped abdomen. Under hindwing with black costal bar, red band across cell does not touch brown basal band. Series of marginal, small blue spots on under forewing.

Habitat : Near streams of forests, gardens. Attracted to animal carcasses. Altitudinal range from the foothills up to 1,500 m.

Habit : Swift fliers, hovers over flowers for nectar, male mud puddle on moist soil or animal dung with other swallowtails on warm and sunny day.

Larval Host Plant : *Magnolia champaca*, *Polyalthia longifolia*, *Annona sp.*, *Magnolia grandiflora*

Status : Common



© Ashutosh Mallik, SFS 2018-20



© Amrit Anjan Sahoo, O.U.A.T 2018-20



69. Tailed Jay

Scientific Name : *Graphium agamemnon* (Linnaeus, 1758)

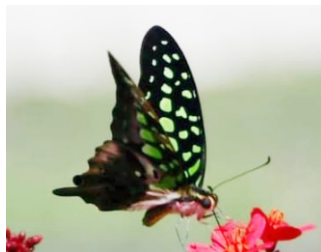
Description : 85-100 mm. Short tailed, green spots on dark brown above, paler brown with green spots below.

Habitat : Commonly found in well wooded areas with good rainfall, prefers forest. Altitudinal range from the foothills up to 1,800 m.

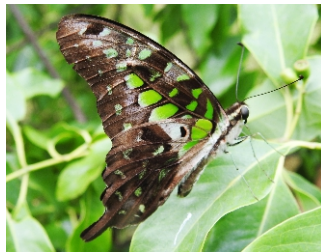
Habit : Fast, restless fliers, quivering wings on sitting position or even during feeding on nectar from flower. Does not sit for a long during day. Less frequent mud puddle. Occasionally visits animal carcasses.

Larval Host Plant : *Polyalthia longifolia*, *Annona sp.*, *Michelia sp.*

Status : Common



© Archana Rawat, SFS 2019-20



© Chandrashekhar Patil, SFS 2018-20



70. Common Bluebottle

Scientific Name: *Graphium sarpedon* (Linnaeus, 1758)

Description: 80-90 mm. Presence of toothed short tail (Hindwing extended in form of short tail), above dark brown with greenish blue band across both wings, from apex of forewing to inner edge of hindwing. Underside of hindwings has a few red spots in black portions.

Habitat: Visit flowering plants like Lantana, Buddleja spp. for nectar. Prefers open places in and around forests, sunny spots in heavily wooded areas, stream edges in forest, visit damp places for mud puddling. Altitudinal range from the foothills up to 2,740 m.

Habit: Fast, swift, restless fliers, strong, rapid, skipping flight. Comes to animal droppings and carcasses.

Larval Host Plant: *Milium tomentosum*, *Cinnamomum camphora*, *Polyalthia longifolia*, *Litsea chinensis*

Status: Common



© Chandrashekhar Patil, SFS 2018-20



© Chandrashekhar Patil, SFS 2018-20

FAMILY: PIERIDAE (WHITES AND YELLOWS)

92 species of Pierids occurred in India. Butterflies of this family are commonly known as Whites and Yellow because of their white and yellow coloured wings, with black, red, orange or yellow markings. Presence of Cryptic coloration or markings on underside of the wings of some species. Forewing is covered by hindwing at rest in some species, only tip of the forewing is visible. Secretion of toxins and mimicry of certain unpalatable butterflies provides protection against predation to the Pierids. Sexual dimorphism occurs in most of the species. Male members of this family often congregate on wet patches near river or streambeds for mud-puddling, while females are of retiring nature hence less seen. The majority of these are seen in open country from sea level to Himalayan meadows. Being sun loving butterflies, often seen basking in sun with partially opened wings.



© Chandrashekhar Patil, SFS 2018-20



71. Lemon Emigrant (Common Emigrant)

Scientific Name : *Catopsilia pomona* (Fabricius, 1775)

Description : 55-80 mm. Both sexes vary from yellow to translucent greenish white. Markings variable. Female has more markings. Underside unmarked or with red-ringed silver spots in centre; additional markings on both wings.

Habitat : Common species of garden and city area. Seen on flowers of the garden through out the year. Mostly in the garden, open countryside and hills. Altitudinal range from the foothills up to 4,000 m.

Habit : Fast fliers, erratic bouncing flight, popularly called “Yellow Blunder” due to its flight. Feeds on nectar of flower and moist spots. Got its common name as “Emigrant” due its migration of adults in large number from one place to another.

Larval Host Plant : *Bauhinia racemose* and other *Bauhinia* sp., *Cassia fistula* and other *Cassia* sp., *Butea monosperma*

Status : Common



© Ashutosh Mallik, SFS 2018-20



© Ashutosh Mallik, SFS 2018-20



72. Mottled Emigrant

Scientific Name : *Catopsilia pyranthe* (Linnaeus, 1758)

Description : 50-70 mm. Both sexes chalky white to greenish yellow. Markings variable. Underside closely mottled with fine brown or green lines. Underside of the hindwing with or without distinct red-ringed silver spots in centre.

Habitat : Common visitor to gardens and city roads with good larval host plants i.e. *Cassia sp.*, and also prefers open countryside, hills. Altitudinal range from the foothills up to 2,700 m.

Habit : Similar to Common Emigrant, but not so abundant. Fairly strong, jerky, erratic flight. Feeds on flower nectar, occasionally seen performing mud puddling together. Known to migrate in large swarms.

Larval Host Plant : *Cassia sp.*, *Sesbania bispinosa*

Status : Common



© Ashutosh Mallik, SFS 2018-20



© Ashutosh Mallik, SFS 2018-20



73. Dark Clouded Yellow

Scientific Name : *Colias fieldii* (Menetries, 1855)

Description : 45-65 mm. Below, deep lemon yellow. Cilia pinkish. Underside of the forewing with large, white centered, black spot at cell end. Series of post discal, black spots which may be obscure. Underside of the hindwing with pink edged, silvery white double spot at cell end. Above bright orange yellow. Male with broad brown border with small, black cell end spot on Upperside of the forewing. Female with broader border than male, with yellowish orange sub marginal spots on upperside of the forewing.

Habitat : Widespread throughout the Himalaya. Migrates to plains in winter. Flies through most of the year from 1,000 m to 5,400 m.

Habit : Fast fliers. A butterfly of open hill slopes and grassy meadows. Feeds on flower nectar.

Larval Host plant : *Lotus sp.*, *Medicago sp.*, *Indigofera sp.*, *Trifolium sp.*

Status : Common



© Ashutosh Mallik, SFS 2018-20



© Ashutosh Mallik, SFS 2018-20



74. Pale Clouded Yellow (Eastern Pale Clouded Yellow)

Scientific Name: *Colias erate* (Esper, 1805)

Description: 45-55 mm. Underside variable, black outer border or black spots at wing border. Black spot at underside of the forewing end cell near the cell bar. Two red-ringed silvery spots in underside of the hindwing cell.

Habitat: A butterfly of open hill slopes and grassy meadows. Prefers open countryside. Altitudinal range between 600 m to 3,500 m.

Habit: Rapid fliers, flies close to ground, feeds on nectar of flowers.

Larval Host Plant: *Cajanus sp.*, *Lens esculenta*, *Lotus sp.*, *Medicago sativa*, *Trifolium alexandrinum*

Status: Common



© Ashutosh Mallik, SFS 2018-20



© Ashutosh Mallik, SFS 2018-20



75. One-spot Grass Yellow

Scientific Name: *Eurema andersonii* (Moore, 1886)

Description: 38-45 mm. Dark streaks at apex, single cell spot, and a bar at cell end on underside of the forewing. A long streak at underside of the hindwing leading edge stretching towards bar at cell-end, central streaks form chain-like band. Markings faint in wet season form. Female paler.

Habitat: Confined to forest, more abundant in wooded place, forest tracks as compared to grasslands and gardens, prefers shade to sunlight. Altitudinal range from the foothills up to 2,200 m.

Habit: Weak bouncing flight, visits flowers and damp patches. Males sometime mud puddle in small groups.

Larval Host Plant: *Cassia sp.*, *Albizia sp.*

Status: Uncommon



© Ashutosh Mallik, SFS 2018-20



© Susanta Kumar Jena, SFS 2018-20



76. Common Grass Yellow

Scientific Name: *Eurema hecabe* (Linnaeus, 1758)

Description: 40-50 mm. Markings variable. Underside of the forewing has two black spots in cell, but one or both of these spots may be absent. Dry season form rusty markings on underside of both sides.

Habitat: One of the most common Indian Butterfly. Prefers gardens, open countryside, forest edges, from plains to foothills. Altitudinal range from the foothills up to 2,600 m.

Habit: Weak, bounding flight, usually close to ground. Feeds on flower nectar, damp patches. Frequent mud puddling by males. Known to migrate in large number.

Larval Host Plant: *Cassia sp.*, *Delonix sp.*, *Albizia sp.*, *Momosa sp.*, *Sesbania bispinosa*.

Status: Common



© Shankar Kumar

Source www.ifoundbutterfly.org



© Amrit Anjan Sahoo, O.U.A.T



77. Psyche

Scientific Name: *Leptosia nina* (Fabricius, 1793)

Description: 35-50 mm. Both sexes white on upperside. Upperside of the forewing with black apex and large black central spot. Underside of the hindwing streaked with fine greenish line.

Habitat: Can be seen near shrubs and bushes along forest tracks, roadsides, gardens. Altitudinal range from the foothills up to 1,900 m.

Habit: Slow, bounding flight which separates it from other whites. Remains close to the ground.

Larval Host Plant: *Cleome viscosa*, *Capparis rheedii*, *Capparis sepiaria*, *Capparis spinosa*, *Capparis zeylanica*, *Crataeva adansonii*

Status: Common



© Gopala Krishna Baliga
Source www.ifoundbutterfly.org



© Ashutosh Mallik, SFS 2018-20



78. Indian Wanderer (Common Wanderer)

Scientific Name: *Pareronia hippia* (Fabricius, 1787)

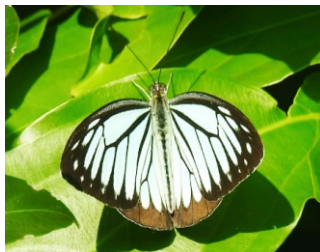
Description: 65-80 mm. Black margin on Upperside in male not broad. Upperside of the forewing with prominent marginal spots which increase in size towards apex. Female is less blue, and marginal markings prominent on upperside of the hindwing. Female mimics Blue Tiger butterfly.

Habitat: Prefers forest and open clearings. Altitudinal range from the foothills up to 1,500 m.

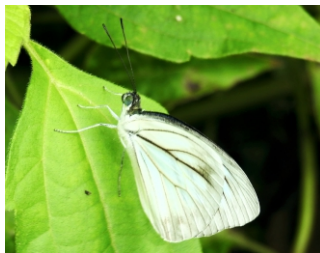
Habit: Fast flier, feeds on flower and nectar.

Larval Host Plant: *Capparis rheedii*, *Capparis zeylanica*

Status: Common



© Ashutosh Mallik, SFS 2018-20



© Chandrashekhar Patil, SFS 2018-20



79. Hill Jezebel

Scientific Name : *Delias belladonna* (Fabricius, 1793)

Description : 70-85 mm. Black above and below with yellow and white markings. Hindwing with large, oval yellow spot at base. Underside of the hindwing with entire cell spot yellow. Prominent yellow band along dorsum to tornus (ssp. *Horsfield ii*). Discal, white spots and sub-marginal, yellow spots. Above black with whitish discal and sub marginal spots. Upperside of the hindwing with dorsum, white, tornus, yellow.

Habitat : Preferring stream edges and forest tracks in open forest from 600 m up to 3,000 m.

Habit : Weak flier, feeds on flower nectar. Large numbers gather on flowering trees and thistle. Males mud-puddle at moist soil, occasionally in large congregations.

Larval Host plant : *Dendrophthoe sp.*, Parasitic plants of *Loranthaceae*

Status : Common



© Ashutosh Mallik, SFS 2018-20



© Ashutosh Mallik, SFS 2018-20



80. Indian Jezebel (Common Jezebel)

Scientific Name: *Delias eucharis* (Drury, 1773)

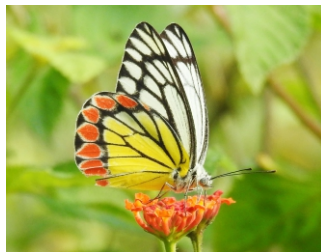
Description: 66-83 mm. Yellow ground colour on underside of the hindwing intersected by black veins and red spots pointing outwards at outer margin. Underside of the forewing is white with black veins. Females having white with yellow and pink tinge above. Markings on upperwings heavier in female than in males.

Habitat: The most widely distributed Jezebel species of India. Visit gardens and open countryside and hill slopes. Altitudinal range from the foothills up to 2,000 m.

Habit: Seen often near the host plants. Fairly slow, fluttering flight, flying fast on threatened. Feeds on flower nectar, very fond of flower and water.

Larval Host Plant: *Viscum sp.*, *Scurrula parasitica*, *Helicanthes elastica*, *Dendrophthoe falcata*

Status: Common



© Chandrashekhar Patil, SFS 2018-20



© Chandrashekhar Patil, SFS 2018-20



81. Large Cabbage White

Scientific Name : *Pieris brassicae* (Linnaeus, 1758)

Description : 65-75 mm. Forewing with pointed apex. Underside of the forewing with white, apex usually pale yellow dusted. Underside of the hindwing dusted with pale yellow. Above, white with black apical border, which is not dentate on its inner edge. Male with two discal black spots, Forewing of female lacks spots.

Habitat : Open places, near cultivation and lightly wooded areas. Usually seen fluttering or hovering. Altitudinal range from the foothills up to 5,000 m.

Habit : Stronger flight, keeps to the low shrubs and bushes. Feeds on flower nectar. Recorded on the wing between February and December in gardens.

Larval Host plant : Cabbage, Mustard, *Arabis amplexicaulis*

Status : Common



© Prabhu Datta Himansu Mishra, SFS 2018-20



© Milind Bhakre
Source www.ifoundbutterfly.org



82. Indian Cabbage White (Asian Cabbage White)

Scientific Name: *Pieris canidia* (Linnaeus, 1768)

Description: 45-60 mm. Upperside of the forewing with a black spot, and black apex having toothed inner edge. Both sexes have unmarked underside of the hindwing with base of leading-edge yellow. In female upperside of the forewing with a black spot, and black apex having toothed inner edge. Female has an additional black spot on upperside of the forewing.

Habitat: Near shrubs and bushes, often found near the host plants like cabbage and mustard (Members of Brassicaceae family). Prefers agricultural fields, gardens, open countryside and forest tracks. Altitudinal range from the foothills up to 3,600 m of elevation.

Habit: Most ubiquitous butterfly in the hills. Weak fliers, with a bounding flight, feeds on flower nectar, visit to damp patches on hot, dry days.

Larval Host Plant: *Nasturtium sp.*, *Rorippa dubia*, *Sisymbrium sp.*, plants of Brassicaceae and Cruciferae family.

Status: Common



© Ashutosh Mallik, SFS 2018-20



© Prabhu Datta Himansu Mishra, SFS 2018-20



83. Common Gull

Scientific Name: *Cepora nerissa* (Fabricius, 1775)

Description: 40-65 mm. Underside whitish yellow with black veins. Underside of the forewing white, yellow apex and leading edge. Underside of the hindwing is pale or dark yellow. Extensive black markings, dark veins on upperside of female. Underside of the hindwing in dry season form is yellow to pale brown, veins slightly dark. Black markings reduced in female of dry season form.

Habitat: Prefers scrub forest and open countryside, seen in drier plains and ill-kept farmlands. Altitudinal range upto 1,800 m.

Habit: Feeds on flower nectar, mudpuddling in hot weather with other pierids, known for migration.

Larval Host Plant: *Cadaba fruticosa*, *Capparis decidua*, *Capparis sepiaria*, *Capparis zeylanica*, *Crataeva adansonii*, *Maerua oblongifolia*

Status: Common



© Chetan Gasti, SFS 2018-20



© Chandrashekhar Patil, SFS 2018-20



84. White Orange-tip

Scientific Name: *Ixias marianne* (Cramer, 1779)

Description: 50-55 mm. Apical half of upperside of the forewing black, enclosing a large orange patch. Upperside of the hindwing has black terminal border. In female the orange patch is narrow, containing four black spots. Area near base and cell dusted with black.

Habitat: Mixed deciduous forest, thorn forests as well as open plains. Altitudinal range from the foothills up to 2,000 m.

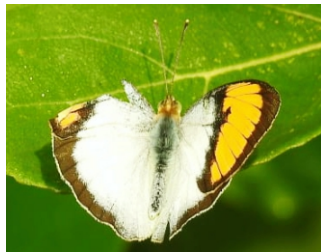
Habit: Rapid flying, Sun-loving, feeds on flower nectar, comes to damp patches.

Larval Host Plant: *Cadaba fruticosa*, *Capparis* sp., *Maeruaoblongifolia*

Status: Uncommon



© Ashutosh Mallik, SFS 2018-20



© Ashutosh Mallik, SFS 2018-20

FAMILY: RIODINIDAE (PUNCHES AND JUDIES)

Earlier butterflies of this family were considered to be the part of Lycaenidae family, latter on described as a distinct family which having 20 species of butterfly from Indian region out of these only 1 species occurred in Southern India. Punches are sun-loving, fast fliers butterflies with tawny or white spots and bands. Judies moves with weak and jerky movement, but capable of fast flying. Judies are often seen in undergrowth, busy probing bird droppings or overripe fruit. Males are territorial. Punches can close their wing over back, but Judies can never close their wing completely over back as plain of the wings are slightly curved. Feeds on flower nectar, animal dung and carcasses. The common larval host plants include the species of *Ardisia sp.*, *Embella sp.*, *Maesa sp.*



© Chandrashekar Patil, SFS 2018-20



85. Double banded Judy (Plum Judy)

Scientific Name : *Abisara bifasciata* (Moore, 1877)

Description : 40-50 mm. Paler reddish brown with pale green eyes, upperside purple-brown in male and Brown or paler in female. Central band on underside of the forewing curved and broader, prominently toothed hindwing.

Habitat : Prefers forests, can be seen in gardens, seen in the plains and foothills. Altitudinal range from the foothills up to 1,200 m.

Habit : Weak fly with jerk. Fly nearer to bushes and low foliage. Feeds at moist spots, basks with half opened wings usually.

Larval Host Plant : *Embella sp.*, *Ardisia sp.*

Status : Common



© Santosh Hatti

Source www.ifoundbutterfly.org



© Chandrashekar Patil, SFS 2018-20

Reference

1. Singh, A.P. (1999). New Forest, Dehradun, India : A Unique manmade Habitat for Butterflies in the Lower Western Himalayas. *Indian Forester* XX : 913-922
2. Singh, A.P. (2011). *Butterflies of India*. Om Books International, 183 pp.
3. Sondhi, S. and Kunte, K. (2018). *Butterflies of Uttarakhand a Field Guide*, 310 pp.
4. Sasi kumar, K. (2010). *Butterflies of Tripura*, 120 pp.
5. Kehimkar, I. (2008). *The Book of Indian Butterflies*. BNHS - Oxford University Press, Mumbai, 497 pp.
6. Kehimkar, I. (2016). *Butterflies of India*. BNHS Field Guides. 505 pp.
7. Smetacek, P. (2017). *A Naturalist's Guide to The Butterflies of India, Pakistan, Nepal, Bhutan, Bangladesh and Sri Lanka*. Prakash Books, 176 pp.
8. Varshney, R.K. and Smetacek, P. (2015). *A Synoptic Catalogue of the butterflies of India*, Butterfly Research Centre, Bhimtal and Indinov Publishing, New Delhi. 261 pp.
9. Kunte, K. 2020. About Us . In Kunte, K., S. Sondhi, and P. Roy (Chief Editors). *Butterflies of India*, v. 2.81. Indian Foundation for Butterflies, www.ifoundbutterflies.org.

INDEX OF COMMON NAMES

ANNEXURE-I

1	Angled Castor	32	22	Common Nawab	34
2	Baron	45	23	Common Orange Awlet	2
3	Baronet	46	24	Common Palmfly	62
4	Blue Pansy	56	25	Common Pierrot	14
5	Blue Tiger	39	26	Common Quaker	25
6	Chocolate Pansy	54	27	Common Redeye	4
7	Commander	47	28	Common Rose	68
8	Common Bluebottle	74	29	Common Sailer	48
9	Common Castor	33	30	Common Silverline	30
10	Common Cerulean	20	31	Common Small Flat	8
11	Common Crow	38	32	Common Treebrown	64
12	Common Evening Brown	63	33	Cornelian	27
13	Common Four ring	66	34	Danaid Eggfly	50
14	Common Grass Yellow	81	35	Dark Clouded Yellow	78
15	Common Gull	88	36	Dark Grass Blue	24
16	Common Jay	72	37	Dark Palm Dart	6
17	Common Jester	59	38	Double-bnded Judy	91
18	Common Leopard	43	39	Forget-me-Not	17
19	Common Map	35	40	Golden Angle	10
20	Common Mime	71	41	Gram Blue	18
21	Common Mormon	69	42	Grass Demon	3

43	Great Eggfly	49	65	Pale Clouded Yellow	79
44	Grey Count	44	66	Pale-grass Blue	23
45	Grey Pansy	52	67	Pea Blue	21
46	Hill Jezebel	84	68	Peacock Pansy	51
47	Himalayan Pierrot	16	69	Plain Tiger	36
48	Indian Cabbage White	87	70	Plains Cupid	19
49	Indian Fritillary	41	71	Psyche	82
50	Indian Jezebel	85	72	Red Pierrot	15
51	Indian Red Admiral	61	73	Rustic	42
52	Indian Skipper	11	74	Slate Flash	29
53	Indian Tortoiseshell	58	75	Small Branded Swift	7
54	Indian Wanderer	83	76	Smaller Dartlet	5
55	Large Cabbage White	86	77	Sorrel Sapphire	13
56	Large Oakblue	26	78	Striped Tiger	37
57	Lemon Emigrant	76	79	Tailed Jay	73
58	Lemon Pansy	55	80	Tawny Coster	40
59	Lime Swallowtail	70	81	Tricolour Pied Flat	9
60	Long-branded Bushbrown	65	82	White Orange-tip	89
61	Mottled Emigrant	77	83	Yamfly	28
62	One-spot Grass Yellow	80	84	Yellow Pansy	53
63	Orange Oakleaf	57	85	Zebra Blue	22
64	Painted Lady	60			

INDEX OF SCIENTIFIC NAMES

ANNEXURE-II

1 <i>Abisara bifasciata</i>	91	22 <i>Danaus chrysippus</i>	36
2 <i>Acraea terpsicore</i>	40	23 <i>Danaus genutia</i>	37
3 <i>Aglais caschmiriensis</i>	58	24 <i>Delias belladonna</i>	84
4 <i>Argyreus hyperbius</i>	41	25 <i>Delias eucharis</i>	85
5 <i>Arhopala amantes</i>	26	26 <i>Deudorix epijarbas</i>	27
6 <i>Ariadne ariadne</i>	32	27 <i>Elymnias hypermnestra</i>	62
7 <i>Ariadne merione</i>	33	28 <i>Euchrysops cnejus</i>	18
8 <i>Burara jaina</i>	2	29 <i>Euploea core</i>	38
9 <i>Caprona ransonnetti</i>	10	30 <i>Eurema andersoni</i>	80
10 <i>Castalius rosimon</i>	14	31 <i>Eurema hecabe</i>	81
11 <i>Catochrysops strabo</i>	17	32 <i>Euthalia aconthea</i>	45
12 <i>Catopsilia pomona</i>	76	33 <i>Graphium agamemnon</i>	73
13 <i>Catopsilia pyranthe</i>	77	34 <i>Graphium doson</i>	72
14 <i>Cepora nerissa</i>	88	35 <i>Graphium sarpedon</i>	74
15 <i>Charaxes bhara</i>	34	36 <i>Heliophorus sena</i>	13
16 <i>Chilades pandava</i>	19	37 <i>Hypolimnas bolina</i>	49
17 <i>Coladenia indrani</i>	9	38 <i>Hypolimnas misippus</i>	50
18 <i>Colias erate</i>	79	39 <i>Ixias marianne</i>	89
19 <i>Colias fieldii</i>	78	40 <i>Jamides celeno</i>	20
20 <i>Cupha erymanthis</i>	42	41 <i>Junonia almana</i>	51
21 <i>Cyrestis thyodamas</i>	35	42 <i>Junonia atlites</i>	52

43	<i>Junonia hierta</i>	53	65	<i>Pelopidas mathias</i>	7
44	<i>Junonia iphita</i>	54	66	<i>Phalanta phalantha</i>	43
45	<i>Junonia lemonias</i>	55	67	<i>Pieris brassicae</i>	86
46	<i>Junonia orithiya</i>	56	68	<i>Pieris canidia</i>	87
47	<i>Kallima inachus</i>	57	69	<i>Pseudozizeeria maha</i>	23
48	<i>Lampides boeticus</i>	21	70	<i>Rapala manea</i>	29
49	<i>Leptosia nina</i>	82	71	<i>Sarangesa dasahara</i>	8
50	<i>Leptotes plinius</i>	22	72	<i>Spialia galba</i>	11
51	<i>Lethe rohria</i>	64	73	<i>Spindasis vulcanus</i>	30
52	<i>Loxura atymnus</i>	28	74	<i>Symbrenthia lilaea</i>	59
53	<i>Matapa aria</i>	4	75	<i>Symphaedra nais</i>	46
54	<i>Melanitis leda</i>	63	76	<i>Talicada nyseus</i>	15
55	<i>Moduza procris</i>	47	77	<i>Tanaecia lepidea</i>	44
56	<i>Mycalesis visala</i>	65	78	<i>Tarucus venosus</i>	16
57	<i>Neopithecops zalmora</i>	25	79	<i>Telicota bambusae</i>	6
58	<i>Neptis hylas</i>	48	80	<i>Tirumala limniace</i>	39
59	<i>Oriens goloides</i>	5	81	<i>Udaspes folus</i>	3
60	<i>Pachliopta aristolochiae</i>	68	82	<i>Vanessa cardui</i>	60
61	<i>Papilio clytia</i>	71	83	<i>Vanessa indica</i>	61
62	<i>Papilio demoleus</i>	70	84	<i>Ypthima huebneri</i>	66
63	<i>Papilio polytes</i>	69	85	<i>Zizeeria karsandra</i>	24
64	<i>Pareronia hippia</i>	83			

